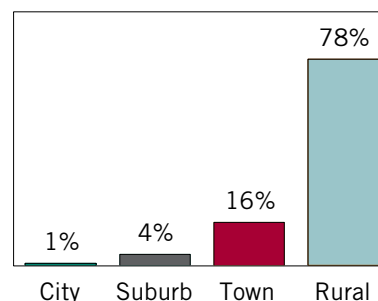


Quick Stats

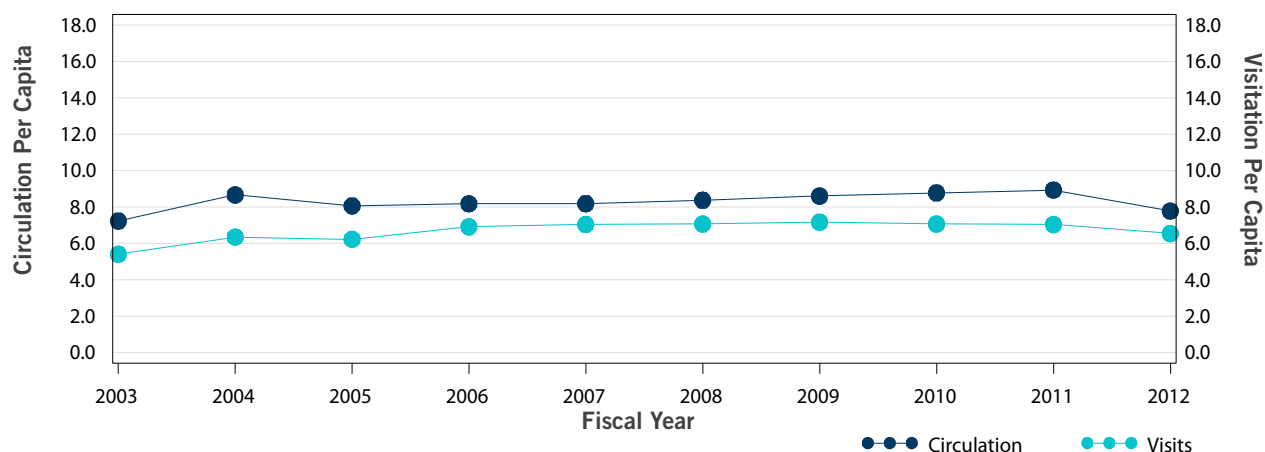
Number of Public Libraries	163
Number of Public Outlets	165
Population Served	592,592
Number of Full Time Equivalent Librarians	201
Number of Full Time Equivalent Staff	334

Public Library Outlets by Locality



Locality based on NCES locale codes.
For additional details see <http://go.usa.gov/YPMW>.

Visitation and Circulation Per Capita (FY 2003-2012)



In Comparison

	FY 2011	FY 2012	% Change	Regional*	National
Services					
Circulation Per Capita	8.94	7.79	▼ -12.87%	9.51	8
Visits Per Capita	7.04	6.55	▼ -7.05%	6.59	4.95
Finance					
Expenditures Per Capita	\$39.72	\$37.27	▼ -6.19%	\$45.59	\$35.47
Operating Revenue Per Capita	\$37.29	\$34.92	▼ -6.37%	\$44.41	\$37.98
Resources					
Print Materials Per 1000 Population	5291.27	4861.67	▼ -8.12%	4835.43	2590.33
Public Use Internet PCs Per Capita	1.61	1.46	▼ -9.85%	1.32	1.13

*The New England region includes Connecticut, Maine, Massachusetts, New Hampshire, Rhode Island, Vermont.
For more information about regions see <http://go.usa.gov/gppk>.