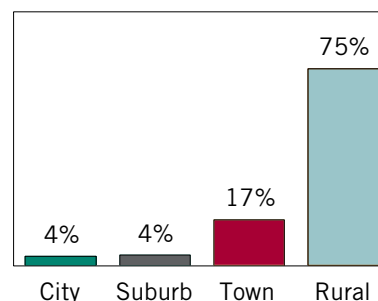


## Quick Stats

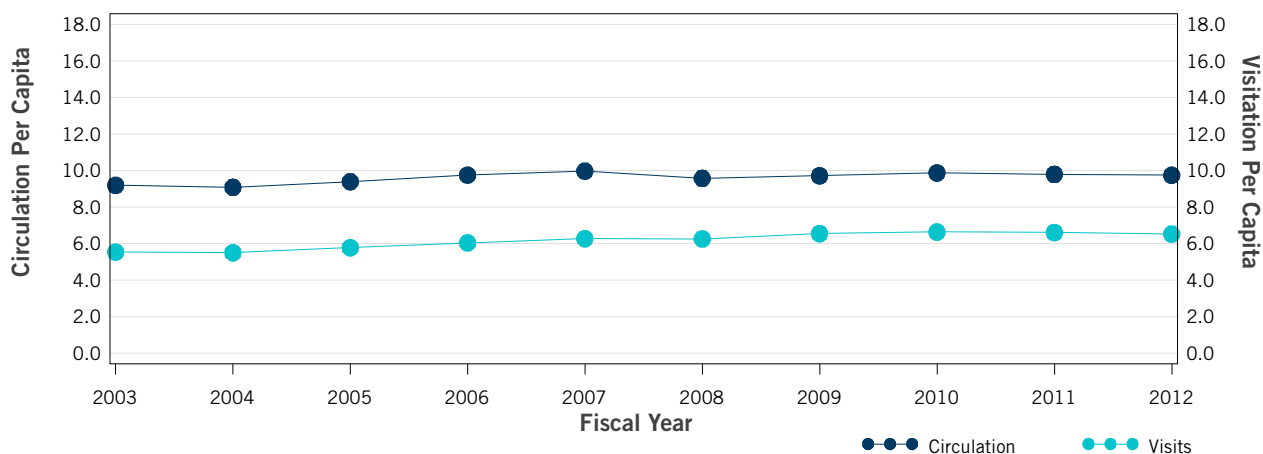
Number of Public Libraries	533
Number of Public Outlets	557
Population Served	2,988,018
Number of Full Time Equivalent Librarians	963
Number of Full Time Equivalent Staff	1684

## Public Library Outlets by Locality



Locality based on NCES locale codes.  
For additional details see <http://go.usa.gov/YPMW>.

## Visitation and Circulation Per Capita (FY 2003-2012)



## In Comparison

	FY 2011	FY 2012	% Change	Regional*	National
<b>Services</b>					
Circulation Per Capita	9.79	9.74	▼ -0.55%	9.99	8
Visits Per Capita	6.61	6.53	▼ -1.26%	5.55	4.95
<b>Finance</b>					
Expenditures Per Capita	\$36.30	\$37.09	▲ 2.17%	\$36.95	\$35.47
Operating Revenue Per Capita	\$37.74	\$38.51	▲ 2.06%	\$39.44	\$37.98
<b>Resources</b>					
Print Materials Per 1000 Population	4037.62	4051.29	▲ 0.34%	3418.34	2590.33
Public Use Internet PCs Per Capita	1.34	1.28	▼ -4.44%	1.31	1.13

\*The Plains region includes Iowa, Kansas, Minnesota, Missouri, Nebraska, North Dakota, South Dakota  
For more information about regions see <http://go.usa.gov/gppk>.