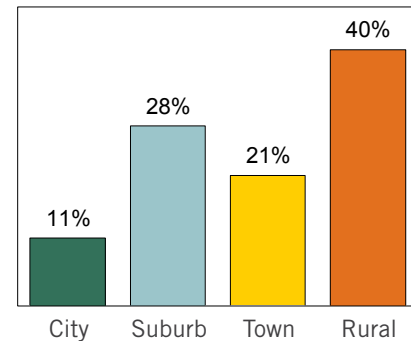


Quick Stats

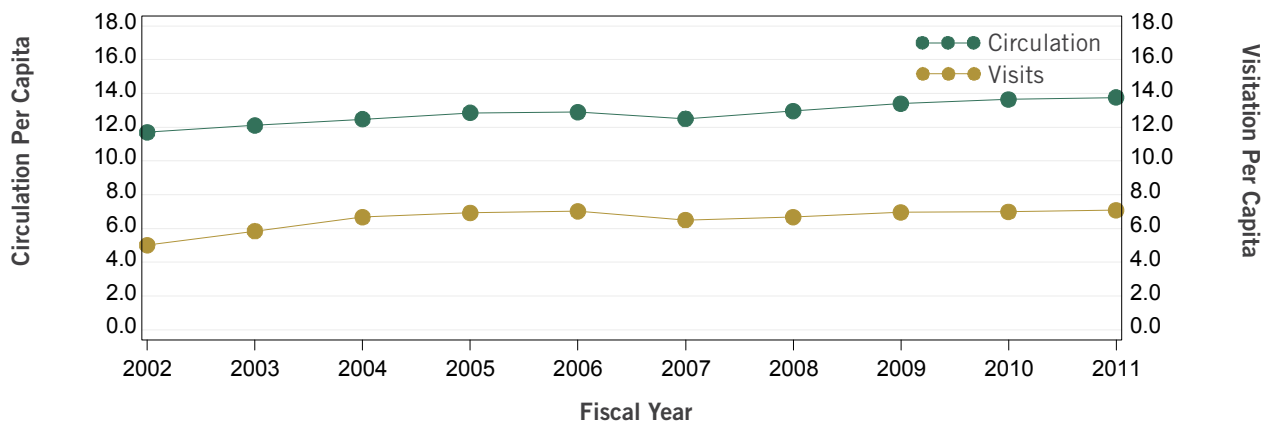
Number of Public Libraries	72
Number of Public Outlets	125
Population Served	2,767,509
Number of Full Time Equivalent Librarians	345
Number of Full Time Equivalent Staff	1,219

Public Library Outlets by Locality



Locality based on NCES locale codes.
For additional details see <http://go.usa.gov/YPMW>.

Visitation and Circulation Per Capita (FY 2002-2011)



In Comparison

	FY 2010	FY 2011	% Change	Regional*	National
Services					
Circulation Per Capita	13.65	13.76	▲ 0.82%	12.24	8.14
Visits Per Capita	7	7.09	▲ 1.33%	6.51	5.09
Finance					
Expenditures Per Capita	\$31.51	\$32.30	▲ 2.51%	\$39.73	\$35.83
Operating Revenue Per Capita	\$33.26	\$32.91	▼ -1.05%	\$42.76	\$38.09
Resources					
Print Materials Per 1000 Population	2470.39	2457.09	▼ -0.54%	2609.47	2638.27
Public Use Internet PCs Per Capita	1.24	1.26	▲ 1.93%	1.38	1.14

*The Rocky Mountain region includes Colorado, Idaho, Montana, Utah, Wyoming
For more information about regions see <http://go.usa.gov/gppk>.