



State Perspectives: Lightning Talks and Small Group Discussions

AZ, CT, ID, MI, NJ, RI, TX



Presentation/Discussion Structure

Structure:

- Lightning presentations by states (15 minutes)
- Discussions at your tables (7 minutes)
- Share-out and Q&A with presenters (7 minutes)

Topics:

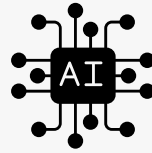
- Artificial Intelligence
- Digital Inclusion
- Experiences with other Federal Funds



Artificial Intelligence

Chris Guerra, AZ

Nicolette Baffoni, RI



A.I. for Library Professionals

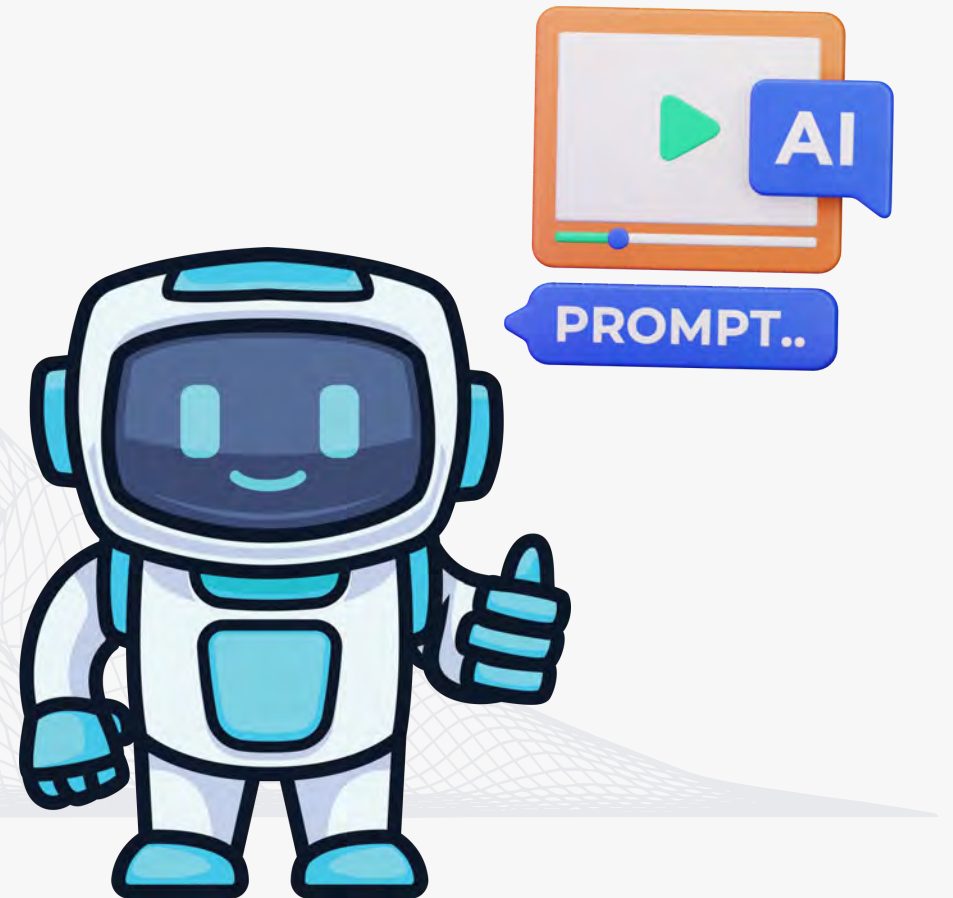
BY CHRIS GUERRA,
GRANTS CONSULTANT AND
STATE DATA COORDINATOR

ARIZONA STATE LIBRARY, ARCHIVES AND PUBLIC
RECORDS



Introduction to A.I.

“Artificial intelligence (AI) is the simulation of human intelligence by machines to perform tasks like understanding language, recognizing patterns, and making decisions.”



Key A.I. Technologies

Generative AI: Creates new content (text, images, music) based on data, useful for assisting patrons with writing and creative projects.

Natural Language Processing (NLP): Enables machines to understand and respond to human language, enhancing information retrieval and user interactions in libraries.

Machine Learning: Analyzes data to recognize patterns, helping libraries personalize services and predict patron needs.



Popular A.I. Tools

Text Generation

- Bard
- ChatGPT
- Copy.ai
- Jasper
- Writesonic

Image Generation

- Artbreeder
- DALL-E
- DeepArt
- MidJourney
- Stable Diffusion

Sound/Music Generation

- Amper Music
- AIVA
- AudioCraft
- Boomy
- Jukedeck

Video Generation

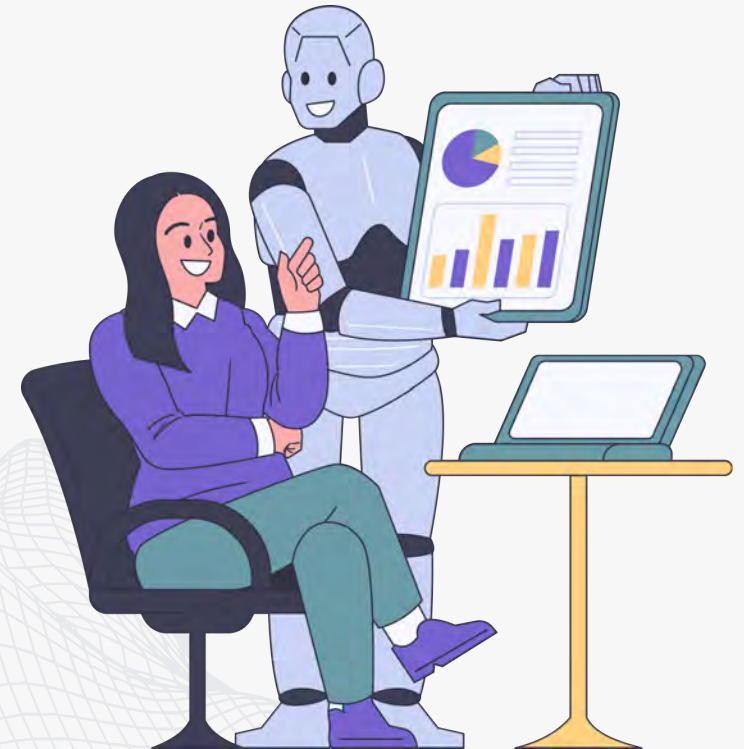
- DeepBrain
- Lumen5
- Pictory
- Rephrase.ai
- Runway ML
- Synthesia



A.I. Use Cases

10 Possible Use Cases of Generative A.I. in Libraries:

1. Accessibility Support
2. Automated Reference Assistance
3. Content Creation
4. Genealogy and Historical Research
5. Health Information and Resources
6. Interactive Storytelling and Learning
7. Language Translation
8. Personalized Reading Recommendations
9. Research Assistance
10. Virtual Learning and Tutoring



A.I.-Related Concerns by Role

Archivists

- Accuracy in Historical Context
- Preservation Challenges
- Ethical Curation

Library Administration

- Budget and Cost Management
- Policy and Regulation Compliance
- Strategic Implementation

Library Media Technicians

- Technical Integration
- Training and Skill Development
- Support and Maintenance

Outreach Coordinators

- Community Trust
- Digital Divide
- Ethical Communication

Programming Librarians

- Program Integrity
- Audience Engagement
- Customization and Control

Reference Librarians

- Accuracy of Information
- Diminished Role of Human Expertise
- Patron Misinformation

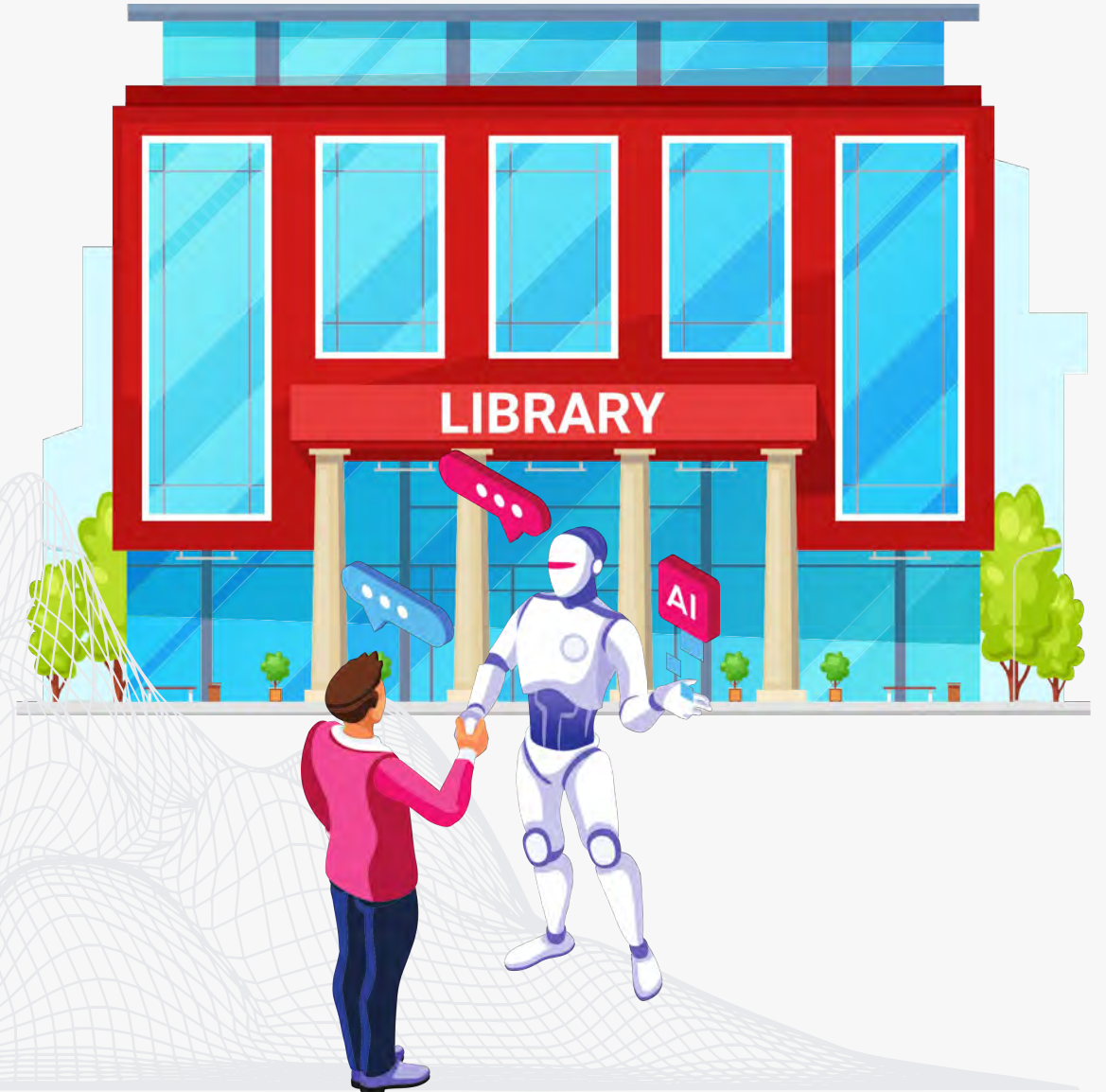
Youth Librarians

- Content Appropriateness
- Impact on Learning and Creativity
- Parental Concerns



Final Thoughts

"As generative AI continues to evolve, it presents both exciting opportunities and significant challenges for public libraries. Embracing these technologies can enhance services, streamline operations, and offer new ways to engage with our communities. However, it's crucial that we approach AI with a balanced mindset, ensuring that we maintain the core values of our profession—accessibility, inclusivity, and the human touch that defines the library experience. By thoughtfully integrating AI, we can empower our patrons while safeguarding the integrity and trust that libraries have built over generations."



A photograph featuring three alpacas of varying sizes against a cloudy sky. On the left, a large alpaca with light brown woolly fur looks directly at the camera with a neutral expression. In the center, a much smaller alpaca of the same color and texture peeks its head and neck into the frame. On the right, another large alpaca, similar in size to the one on the left, also looks towards the camera. The text 'QUESTIONS?' is centered in the middle of the image in a simple, black, sans-serif font.

QUESTIONS?



AI & YOUR STATE LIBRARY AGENCY

Nicolette Baffoni, LSTA Coordinator
RI Office of Library & Information Services
IMLS Grants to States Conference
September 19, 2024



01 - STATE GOVERNMENT & AI

What are the implications for AI at a broader government level and as state agencies?

02 - USE CASES FOR LSTA

How might state library employees use AI in the administration of LSTA and how are the libraries we support using AI?

03 - COMMUNICATING ABOUT AI

How can we frame our learning and communicating about AI to be most effective?



RI STATE GOVERNMENT AI STRATEGY



Focus on “Everyday AI”



Low appetite for risk



Public trust, data security & workforce uncertainty are chief considerations



Getting to “AI Readiness”



Slow, deliberative
policy making

USE CASES FOR LSTA ADMINISTRATION

WORD SMITHING

BRAINSTORMING

STATE PROGRAM REPORT

- Word counts
- Summarizing long reports
- Finding common threads



USE CASES FOR LSTA ADMIN: SUBAWARDEES

GRANT APPS

GRANT REPORTS

BENEFITS / PITFALL

The Good

- Improved writing quality
- Better alignment to NOFO/RFP

The Bad

- AI as solution rather than a tool
- The Defiantly/Definitely Principle TM



ONE APPROACH TO AI

01 - DEMYSTIFY

AI is not magic, it is computer science

02 - DEMYTHOLOGIZE

What is AI hype and what is AI reality?

03 - DEMONSTRATE

Using AI well requires a demonstrable skillset that can be taught

04 - DEMOCRATIZE

That skillset must include using AI ethically in the context of society

From Florida International Libraries Presentation "Breaking Boundaries: Harnessing the Power of Artificial Intelligence and ChatGPT to Transform Library Services", ALA Annual Conference, June 27 - July 2, 2024



THANK YOU

Nicolette Baffoni, nicolette.baffoni@olis.ri.gov

DISCUSSION QUESTIONS



Does your state have an AI policy in place yet?



Have you used ChatGPT or other AI tools in your SPR or other LSTA Activities? do we all think this is ethical/okay?



What are your experiences with libraries using AI, especially sub-awardees?



How are you approaching AI with your libraries? Providing training? Discussions? Do people seem excited? Nervous?



Table Discussion- A.I.



Share Out/Q&A- A.I.



Digital Inclusion

Chris Gavreau, CT

Karren Reish, MI

Erica McCormick, TX

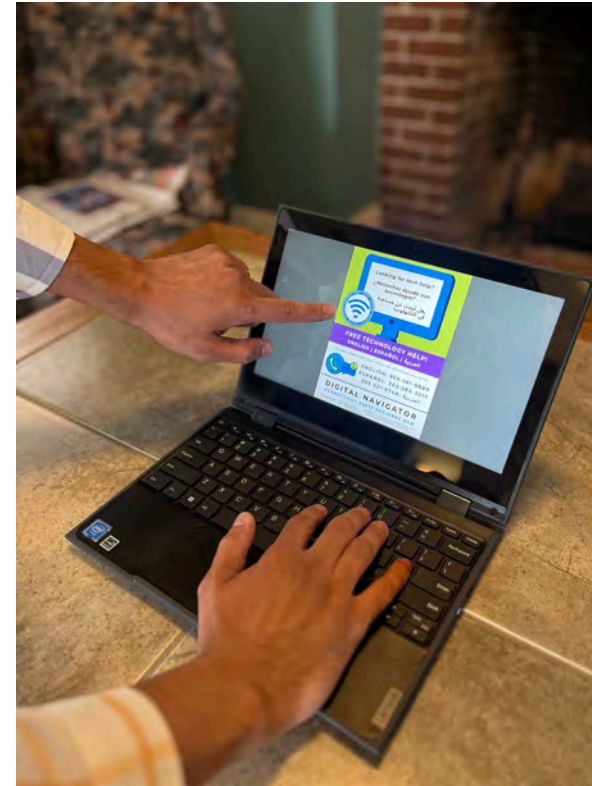


CT State Library

Division of Library Development

Digital Equity Initiatives

- LSTA / ARPA funded subawards for 4 navigation pilots
- Connecticut Libraries & Partners for Digital Equity
- Regional Navigator Sharing Plan (IMLS Leadership Grant LG-254838-OLS-23)



These projects have been made possible in part by the Institute of Museum and Library Services under the provisions of the Library Services and Technology Act, administered by the Connecticut State Library.





CONNECTICUT Libraries & Partners for Digital Equity

A Project of the CT State Library

CT Library and Partners for Digital Equity is made possible in part by the Institute of Museum and Library Services under the provisions of the Library Services and Technology Act, administered by the Connecticut State Library.



Digital Navigator: Connecticut State Regional Hub



Looking for tech help?
¿Necesitas ayuda con tecnología?
هل تبحث عن مساعدة في التكنولوجيا؟

FREE TECHNOLOGY HELP!
ENGLISH | ESPAÑOL | العربية

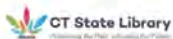
FOR MORE INFORMATION, OR TO SCHEDULE AN APPOINTMENT, CALL OR TEXT



ENGLISH: 959-261-0689
ESPAÑOL: 203-584-3517
العربية: 203-521-9740



DIGITAL NAVIGATOR
CONNECTICUT STATE REGIONAL HUB



This project was made possible in part by the Institute of Museum and Library Services, National Leadership Grants - Libraries award LG-254838-OLS-23, administered by the Connecticut State Library



CT State Library
Division of Library Development

Any Questions?

Christine.Gauvreau@ct.gov

Michigan – Digital Inclusion Grants (1)

Digital Inclusion is one of 3 priorities for our Improving Access to Information Grants – a year long, \$5K to \$25K grant program.

How many did we fund and which libraries have gotten them?

- 26% of approved grants since 2019 – 15 of 56.
- 14 public libraries / 1 academic library
- 3 rural locations / 12 urban locations



Michigan – Digital Inclusion Grants (2)

What services or programs have been requested?

- 3 Wi-Fi extension for 2 rural locations and 1 low-income urban area
- 8 Laptop or device lending programs – all low-income urban areas.
- 3 Disability/Neurodivergent Patron support – 2 urban areas / 1 rural area.
- 1 Remote Access for Programs – 1 urban area.



Michigan – Digital Inclusion Grants (3)

Lessons Learned:

- Low-income urban and rural areas are focused on basics – devices and internet access.
 - Internet access is DIFFICULT to implement in rural areas.
- Support for disabled/neurodivergent patrons is in middle income and affluent areas – both rural and urban.
- Support for remote access programming is from an affluent area.
- Despite the grants covering a 6-year period with many technology changes, the libraries are still focusing on similar projects that are for basic services.





Help Close the Digital Divide

With TSLAC's New Library Digital Opportunity (LDO) Team!

Erica McCormick | Library Development Program Coordinator





*Broadband availability
and affordability*

*Online accessibility
and inclusivity of
public resources*



Digital literacy skills

*Online privacy
and cybersecurity*



*Device availability,
affordability , and
technical support*

Library Digital Opportunity Team

Henry Stokes
Digital Opportunity
Program Coordinator



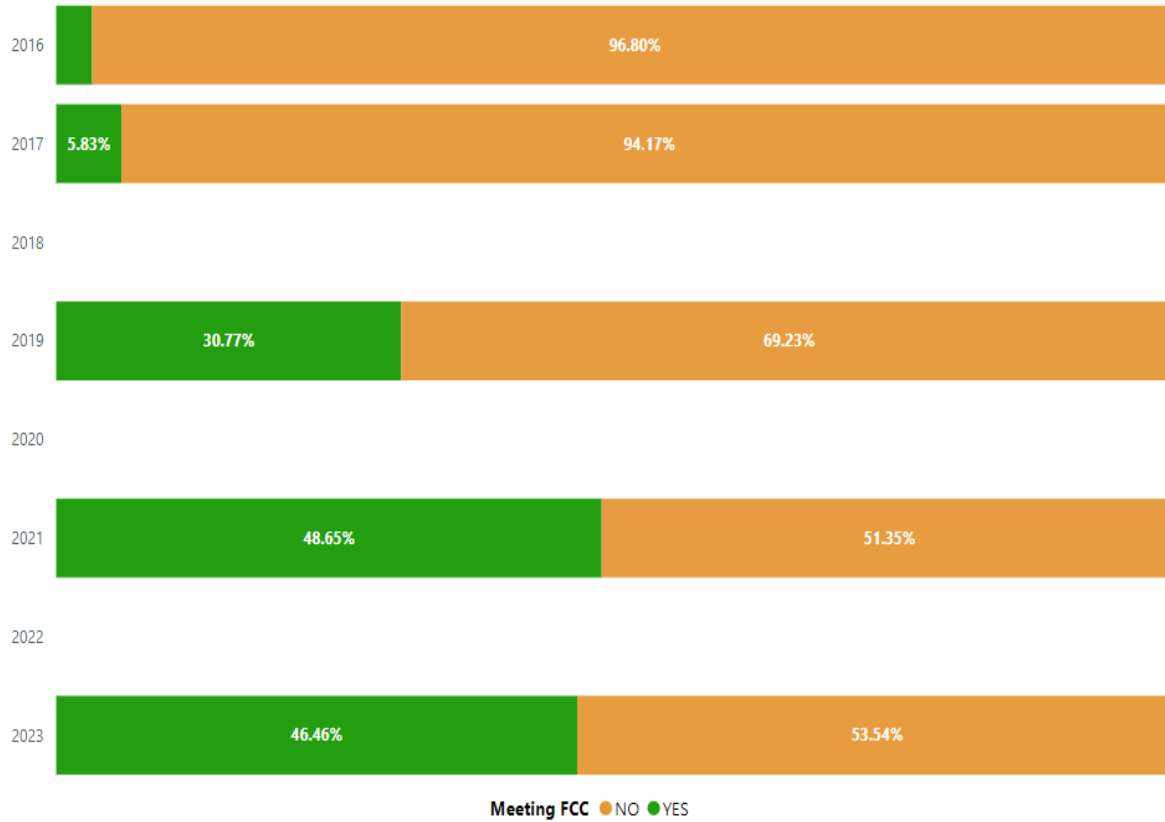
Promise Madu
Data and Project Coordinator



Warren Davis
Community Engagement
and Outreach Coordinator




Overview of Texas Public Libraries Meeting FCC Standards by Year



2023 up to 46.5% meeting FCC standards




Research



TEXAS STATE LIBRARY
AND
ARCHIVES COMMISSION

Texas Public Libraries:
Serving Communities to
Enhance Digital Literacy



Prepared for the
Texas State Library and Archives Commission
By the Bureau of Business Research, IC² Institute
The University of Texas at Austin

[Digital Literacy Report](#)



**LAUNCHING DIGITAL
NAVIGATOR PROGRAMS IN
TEXAS PUBLIC LIBRARIES**

A PROGRAM OF THE TEXAS STATE LIBRARY AND ARCHIVES COMMISSION
THE UNIVERSITY OF TEXAS AT AUSTIN
TECHNOLOGY & INFORMATION POLICY INSTITUTE

Sharen Strever, Whitney Nelsen, Sheila Lalwani
December, 2023

[Digital Navigator Grant Report](#)

Digital literacy programs



- Partnership with Texas Workforce Commission and Texas Center for Literacy and Lifelong Learning
- Created an [online, fully downloadable and customizable digital literacy toolkit](#).



Table Discussion- Digital Literacy



Share Out/Q&A- Digital Literacy



Other Federal Funds

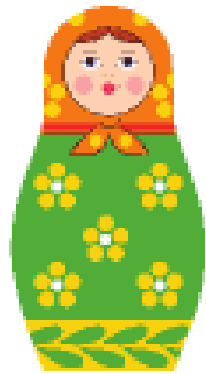
Maura Walsh, NJ

Stephanie Bailey-White, ID

FEDERAL GRANT FUNDING



Idea



Research



Team



Planning



Timeline



Budget



REALITY



TRIED & TRUE TRAINING



2.5 days of sessions
Offered virtually or in-person
Multiple tracks



Intense three-day conference
Many choices and tracks
DC location – no virtual



Intense, two-day workshops
Management or Writing
Offered virtually or in-person

IDAHO COMMISSION FOR
LIBRARIES

STEPHANIE
BAILEY-WHITE

Idaho State Library -- established in 1901 to provide reading materials to Idahoans via a traveling library and to help in the establishment and improvement of free public and school libraries to deliver, foster, and promote library services throughout the state.



2006
name change to
ICfL

STATE
LIBRARY

ICFL

I D A H O

C O M M I S S I O N

F O R L I B R A R I E S

libraries.idaho.gov

The Idaho Commission for Libraries (ICfL) builds the capacity of the more than 850 public, school, academic, and special libraries in Idaho to best serve their communities through: statewide programming and resources, like Read to Me and LiLI; consulting; continuing education; partnerships; and aid to underserved populations, such as the visually impaired through the Idaho Talking Book Service.

CURRENT
FEDERAL
AWARDS

- Capital Projects Fund
- Elementary and Secondary School Emergency Relief

RECENT &
UPCOMING
FEDERAL
AWARDS

- Digital Equity Planning Grant
- Digital Equity Capacity Grant





INTRA-AGENCY COLLABORATION
(subject matter expert -- grant
administrator -- financial team)



DEVELOP INTERNAL POLICIES



NAVIGATE SPENDING AUTHORITY LANDSCAPE



CONSIDER STAFF
CAPACITY

LESSONS
LEARNED



BUILD POSITIVE RELATIONSHIPS
WITH FUNDING AGENCIES



VASTLY DIFFERENT REPORTING REQUIREMENTS



WORK WITH PARTNERS

LESSONS
LEARNED

OUTCOMES

- Subgrants to Libraries, Schools, & Tribes
- Materials for Libraries & Schools
- Aiming for Long-Term Impacts

OUTCOMES

(cont)

- Digital Access for All Idahoans Plan
- Success Leads to More Funding Opportunities
- Stronger Partnerships

STEPHANIE BAILEY-WHITE

State Librarian, Idaho

Stephanie.Bailey-White@libraries.idaho.gov

libraries.idaho.gov



Table Discussion- Other Federal Funds



Share Out/Q&A- Other Federal Funds