



Follow-up to the Future of the State Program Report (SPR): Revisiting Outcomes

Teri DeVoe, Associate Deputy Director, Grants to States
Matt Birnbaum, Director of Research and Evaluation

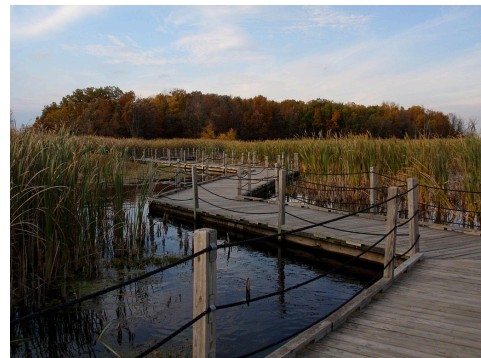


Overview

- SPR big picture
- New since last year
- Coming attractions!



Photo courtesy of Clifton McReynolds



[This photo](#) by [w>User:Wonder ai](#) is licensed under [CC BY-SA 2.0](#)



[This photo](#) by [jpellgen](#) is licensed under [CC BY-NC-ND 2.0](#)



SPR big picture

- Initial SPR build-out was 2013-16
 - Outcomes and Public View added by 2017
 - New developer for cloud migration in 2019
 - “Steady state” maintenance since 2020
- New SPR has given us better national data to tell statistical trend stories
- We continue improving incrementally/iteratively



This photo by [Paul M Walsh](#) is licensed under [CC BY-NC 2.0](#)

Principles for engagement for developing the SPR

- This is a federal-state partnership program
- We rely on your active participation/input
- Some improvements will help states and some IMLS
- SPR enhancements will be a cooperation between SLAAs, G2S staff, IT engineers, and IMLS research staff for support
- Any planned enhancements will keep the timing of the next five-year evaluation in mind



This photo by [Stephanie Caine](#) is licensed under [CC BY 2.0](#)

New SPR enhancements...

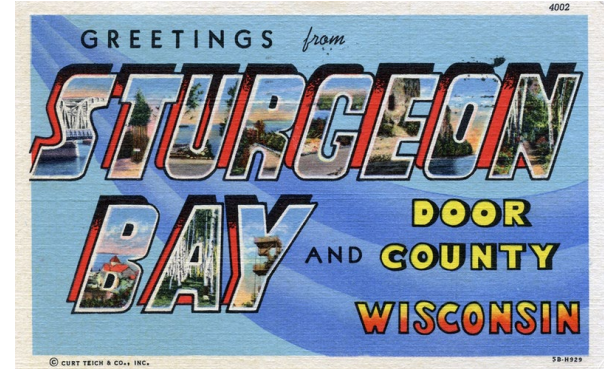
- Mechanism to prevent more than one user at a time (i.e., data loss) in Projects, the FSR, and Admin (thanks TX et al.!)
- New column for Match in List Projects table (thanks IL!)
- Back-end preparatory work on Login.gov implementation



[This photo](#) by [Printerval](#) is licensed under [CC BY-NC 4.0](#)



[This photo](#) by [Foodie Buddha](#) is licensed under [CC BY-NC 2.0](#)



[This photo](#) by [Steve Shook](#) is licensed under [CC BY 2.0](#)

...And lots of fixes

- Initial updates to address site visit checklist saving issues (thanks NJ, KY, MO!)
- Abstract fields turned plain text to address longtime formatting/saving issues (thanks to many!)
- Error message fixes for newly copied projects with formerly rich text (thanks IN, LA!)
- Long-awaited clean-up of Public View export data
- Limits to abstract length and relevant pop-up messages (related to Public View export)
- Longer-term fixes for duplicated/overwritten/missing projects (thanks CA, ME, WA, FL, AK!)
- Root cause fixes for locale validation errors (thanks ME, CO, and more!)
- Data export fixes for project director fields (thanks NC!)
- Partner field fixes on Print format (thanks IL!)
- Copy activity feature fixes (thanks VT!)
- Batch upload fixes (thanks MO!)
- Other error message fixes (thanks CA, OH, NV, AK, AZ!)





Potential new SPR enhancements

- Alignment of beneficiary age ranges with Public Libraries Survey and SLAA Survey
- Lockdown on dual users in other parts of the SPR (site visit checklist, state info, etc.)
- Data validation at the page/project level
- Increased file size allowance for Additional Materials
- Additional Materials selection feature for Public View inclusion
- And more!

Coming soon – login.gov

- SPR currently has a single sign-on
- Due to federal security requirements, the SPR needs to move to **multi-factor authentication (MFA)**
- eGMS already moved to MFA through login.gov, and SPR will use login.gov, too
- IMLS will update you before SPR changes occur, and we anticipate a transition period to ease everyone into login.gov

This is a test server and sandbox for the SPR

Version 4.1.9013 (9/4/2024)

Grants To States Program Report

Sign In To Continue To The State Program Report

Sign In

Sign in with  LOGIN.GOV

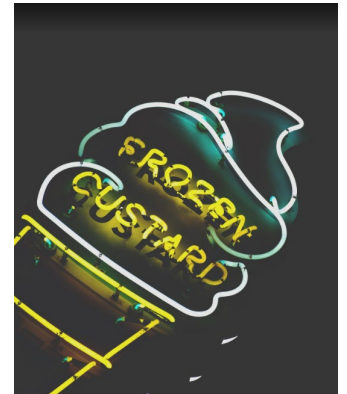
Getting started with  LOGIN.GOV

Outcomes surveys: assessing the need and usefulness

- We introduced outcomes surveying of beneficiaries in 2017
 - It reflected longstanding outcome-based management in the public sector
 - It aligned with PLA's Project Outcome in attempting to minimize beneficiary double reporting
- We observed mixed performance in using outcome-based surveying and have concern about burning out SLAAs
- We suggest using 2025 as a time to revisit whether to remove or change our approach to outcome-based assessment in the SPR



This photo by Kirk K is licensed under [CC BY-NC-ND 2.0](https://creativecommons.org/licenses/by-nc-nd/2.0/)



This photo is licensed under [CC0 4.0](https://creativecommons.org/licenses/by/4.0/)

Questions?