



## From the IMLS Director

As we enter a new phase of our national life, with the pandemic receding (please!) and our economic and societal landscape coming with new opportunities and challenges for our nation's libraries and museums, I offer these thoughts about the importance and focus of our grantmaking.

Museums significantly funded by grants and earned revenue have by and large survived by making very hard decisions, presenting themselves ever more significantly online, and joining local partners to respond in every way to community need. Libraries similarly have renewed, redefined, and deepened what it means to be an anchor institution, called on to be what can be described as the Swiss army knife of community, an answer, sometimes THE answer to every community problem.

With the exception of our largest institutions, all of the wonderful activity in our museums and libraries is intensely local and community-driven, community-inspired. But our grantmaking, while it recognizes the individuality of our institutions, stresses best practices, angles of impact, preservation and promotion of heritage, civilizational value, and being a part of the recognition of and reckoning with equity in its largest sense, the sense of justice and fairness.

To that end I want to stress the following.

Our strategic emphasis on lifelong learning must encourage shared knowledge, the development of various literacies, including digital, economic, environmental, health, social, and historical but always remembering that the fundamental literacy is reading. The most essential skill and the most important place to challenge the gaps and divides in our country is with fundamental literacy and the support for that through equitable cultural literacy unites our cultural institutions with our educational institutions in the only cultural war we should all be engaged in: the war on illiteracy.

Professional education and development is a key part of this. And to advance equity in the professional ranks, which is obviously also to advance it for patrons and the community, we need more resources to support diversity in its many forms and in all ranks of our institutions. We should reflect the country we live in through mind and heart (as well as class and color). Paid internships, scholarships, and fellowships in all levels of professional development should be encouraged.

Community engagement should seek out the diversity of our history, our local stories, the stories of those communities within the larger community, and let all the voices be heard, preferably together. Civil discourse is very much needed today, and our most trusted institutions must play a central role. Debates and discussions, convenings and presentations of curated information with face-to-face engagement about what constitutes

fact and what constitutes opinion, and learning through that not only what we disagree about, but also that with which we agree. Modeling civic discourse is of first importance.

Increasingly, museums and libraries are working to bring community voices into our collections, archives, and storytelling to make sure we match the preservation of history and the presentation of knowledge and culture to community need. Community needs must also therefore be in dialogue with a world of knowledge made ever more accessible to the widest range of patrons. Cultural literacy is necessary for the kind of literacy and the kind of skills that define real equity.

Finally, the Museum and the Library are portals to enlightenment and delight. We should share the best of what has been, what we know today, and what we think about the future with all our citizens, family, and friends. We should make sure these are their stories too so that we all belong to the institution of enlightenment and the institution belongs to us.

A handwritten signature in black ink that reads "Crosby Kemper". The signature is written in a cursive, slightly slanted style.

Crosby Kemper

# MUSEUM GRANTS FOR AFRICAN AMERICAN HISTORY AND CULTURE

## FY 2023 NOTICE OF FUNDING OPPORTUNITY

<b>Federal Awarding Agency</b>	Institute of Museum and Library Services
<b>Funding Opportunity Title</b>	Museum Grants for African American History and Culture
<b>Announcement Type</b>	Modification of FY2022 Notice of Funding Opportunity
<b>Funding Opportunity Number</b>	AAHC-FY23
<b>Assistance Listing Number</b>	45.309
<b>Application Deadline</b>	Submit through Grants.gov by 11:59 p.m. U.S. Eastern Time on November 15, 2022.
<b>Anticipated Date of Notification of Award Decisions</b>	June 2023 (subject to the availability of funds and IMLS discretion)
<b>Beginning Date of Period of Performance</b>	Projects must begin on July 1, 2023.

### Table of Contents

A. Program Description.....	2
B. Federal Award Information .....	5
C. Eligibility Information.....	5
D. Application and Submission Information .....	8
E. Application Review Information.....	20
F. Award Administration Information.....	22
G. Contacts.....	23
H. Other Information.....	23
Appendix One – IMLS Assurances and Certifications .....	24
Appendix Two – Guidance for Required Registrations .....	29
Appendix Three – Guidance for Completing Forms and Other Application Components.....	30
Appendix Four – Guidance for Creating a Digital Products Plan.....	39
Appendix Five – Guidance for Conservation Surveys.....	41
Appendix Six – Conflict of Interest Requirements.....	42
Appendix Seven – Keywords.....	43

# Museum Grants for African American History and Culture

## A. Program Description

### A1. Agency Mission, Goals, and Objectives

The mission of the Institute of Museum and Library Services (IMLS) is to advance, support, and empower America's museums, libraries, and related organizations through grantmaking, research, and policy development. Guiding our grantmaking are three agency-level goals with two objectives each.

- **Goal 1: Champion Lifelong Learning**
  - Objective 1.1: Advance shared knowledge and learning opportunities for all.
  - Objective 1.2: Support the training and professional development of the museum and library workforce.
- **Goal 2: Strengthen Community Engagement**
  - Objective 2.1: Promote inclusive engagement across diverse audiences.
  - Objective 2.2: Support community collaboration and foster civic discourse.
- **Goal 3: Advance Collections Stewardship and Access**
  - Objective 3.1: Support collections care and management.
  - Objective 3.2: Promote access to museum and library collections.

The Museum Grants for African American History and Culture Program is designed to support the achievement of these agency-level goals and to facilitate the delivery of significant results consistent with the IMLS federal authorizing legislation (20 U.S.C. § 9101 *et seq.*; in particular, § 9173 (Museum services activities)); and 20 U.S.C. § 80r *et seq.* (National Museum of African American History and Culture), in particular 20 U.S.C. § 80r-5 (Educational and liaison programs). Each award that IMLS makes through Museum Grants for African American History and Culture will align with one of these agency-level goals and one associated objective and will thus contribute meaningfully to the achievement of both program and agency-level goals.

[Click here to search awards made through Museum Grants for African American History and Culture by year, log number, state, city, and/or keyword.](#)

Throughout its work, IMLS places importance on diversity, equity, and inclusion. This may be reflected in an IMLS-funded project in a wide range of ways, including efforts to serve individuals of diverse geographic, cultural, and socioeconomic backgrounds; individuals with disabilities; individuals with limited functional literacy or information skills; individuals having difficulty using a library or museum; and underserved urban and rural communities, including children from families with incomes below the poverty line.

## A2. Museum Grants for African American History and Culture Goals and Objectives

This program is designed to build the capacity of African American museums and support the growth and development of museum professionals at African American museums. The program supports projects that nurture museum professionals, build institutional capacity, and increase access to museum and archival collections at African American museums and Historically Black Colleges and Universities (HBCUs).

As a result, the Museum Grants for African American History and Culture Program has significant potential to generate positive societal impact through project activities undertaken as part of the grant-funded work and activities that may be complementary to the project. IMLS does not prescribe the type, focus, reach, or scale of societal impact required for each project, but the questions to be addressed in the application Narrative and the review criteria reflect the agency's commitment to both advancing knowledge and understanding and to ensuring that the federal investment made through grants generates benefits to society. Applicants should keep these two agency commitments in mind when they conceptualize their projects, identify the target group(s) they propose to reach, prepare their work plans, and formulate their intended results.

Projects designed to build the capacity of African American museums may involve increasing the number of museum professionals working at African American museums to enable the museum to expand educational programs, engage with the community, enhance organizational operations and resiliency, or provide for enhanced care of collections. IMLS encourages museum professionals and institutions to share and adopt best practices and innovations by creating skill-building and capacity-expanding programs that are applicable across all levels of museum staff.

Projects to support the growth and development of museum professionals at African American museums may involve hosting paid internships at African American museums; creating mentorship opportunities for emerging and mid-career staff to connect with, learn from and engage with senior leaders and founders in the African American museum community; or creating learning and growth opportunities for museum staff to build skills, enhance knowledge and expertise in museum-related subjects and areas of need.

Reflecting IMLS's agency-level goals, Museum Grants for African American History and Culture has two program goals and three or four objectives associated with each goal. Each applicant should align their proposed project with one of these two goals and one or more of the associated objectives. Goal and objective choices should be identified clearly in the Narrative (see [Section D2c](#)).

- **Goal 1: Build the capacity of African American museums and their ability to serve their communities.**
  - Objective 1.1: Develop, enhance, or expand public programs, exhibitions, and/or school programs.
  - Objective 1.2: Enhance professional management.
  - Objective 1.3: Improve [care and conservation of museum collections](#) and expand access to collections and associated data.
  - Objective 1.4: Foster partnerships and collaborations among museums and institutions of higher education.

- **Goal 2: Support the growth and development of museum professionals at African American museums.**
  - Objective 2.1: Develop and implement internship, fellowship, and mentoring programs structured to support emerging professionals entering the museum field.
  - Objective 2.2: Develop and implement equitable and inclusive staff recruitment and retention programs.
  - Objective 2.3: Create learning and growth opportunities designed to build skills, enhance knowledge, and provide opportunities to share expertise.

[Click here for samples of recently funded Museum Grants for African American History and Culture applications.](#)

### A3. Performance Measures

The Museum Grants for African American History and Culture Program uses four performance measures as a basis for understanding (1) how well the grant program is meeting its goals and (2) how individual projects are being managed.

- **Effectiveness:** The extent to which activities contribute to achieving the intended results
- **Efficiency:** How well resources (e.g., funds, expertise, time) are used and costs are minimized while generating maximum value for the target group
- **Quality:** How well the activities meet the requirements and expectations of the target group
- **Timeliness:** The extent to which each task/activity is completed within the timeframe proposed

Each applicant is asked to describe how they will monitor and assess their performance in carrying out their project as a whole using these four measures (see [Section D2c Item 7](#)).

### A4. Authorizing Statute and Regulations

**Statute:** 20 U.S.C. § 9101 *et seq.*; in particular, § 9173 (Museum services activities); and 20 U.S.C. § 80r *et seq.* (National Museum of African American History and Culture), in particular 20 U.S.C. § 80r-5 (Educational and liaison programs).

**Regulations:** 45 C.F.R. Chapter XI and 2 C.F.R. Chapter XXXI

*Recipients must follow the IMLS regulations that are in effect at the time of the award.*

*The Office of Management and Budget (OMB) guidance on Uniform Administrative Requirements, Cost Principles, and Audit Requirements for Federal Awards (Uniform Guidance) can be found at 2 C.F.R. part 200. With certain IMLS-specific additions, IMLS regulations at 2 C.F.R. part 3187 formally adopt the 2 C.F.R. part 200 Uniform Guidance.*

### A5. Equal Opportunity

IMLS-funded programs do not discriminate on the basis of race, color, national origin, sex, disability, or age. For further information, email the Civil Rights Officer at [CivilRights@imls.gov](mailto:CivilRights@imls.gov) or write to the Civil Rights Officer, Institute of Museum and Library Services, 955 L'Enfant Plaza North, SW, Suite 4000, Washington, DC, 20024-2135.

## B. Federal Award Information

<b>Total amount of funding IMLS expects to award through this announcement</b>	\$5,231,000	
<b>Expected performance indicators, targets, baseline data, and data collection</b>	See <a href="#">Section A3</a> .	
<b>Anticipated number of awards</b>	30	
<b>Expected amount of individual awards</b>	Small Project	\$5,000 - \$100,000
	Large Project	\$100,001 - \$500,000
<b>Average amount of funding per award experienced in previous years</b>	\$174,367	
<b>Anticipated start dates for new awards</b>	Projects must begin on July 1, 2023.	
<b>Anticipated period of performance</b>	July 1, 2023 – June 30, 2026. Project activities may be carried out for one to three years.	
<b>Type of assistance instrument</b>	Grant	

The funding in the above Federal Award Information table is subject to the availability of funds and IMLS discretion. IMLS is not bound by any estimates in this announcement.

If your request for federal funding, including all direct and indirect costs, is outside the applicable funding level range for your selected project type, your application will be rejected from consideration for funding in this program.

Applications for renewal or supplementation of existing projects are not eligible to compete with applications for new awards.

Contingent upon the availability of funds, the quality of applications, and IMLS discretion, IMLS may make additional awards from the pool of unfunded applications from this competition.

## C. Eligibility Information

### C1. Eligible Applicants

To be eligible for an award under this Museum Grants for African American History and Culture Notice of Funding Opportunity, your organization must meet all three of the following criteria:

1. Must be either a unit of State, local, or tribal government or be a private, nonprofit organization that has tax-exempt status under the Internal Revenue Code;

2. Must be located in one of the 50 States of the United States of America, the District of Columbia, the Commonwealth of Puerto Rico, the U.S. Virgin Islands, Guam, American Samoa, the Commonwealth of the Northern Mariana Islands, the Republic of the Marshall Islands, the Federated States of Micronesia, or the Republic of Palau; and
3. Must qualify as one of the following:
  - (a) A museum whose primary purpose, as reflected in its mission, is African American life, art, history, and/or culture, encompassing: the period of slavery; the era of Reconstruction; the Harlem renaissance; the civil rights movement; and other periods of the African American diaspora; and using a professional staff, is organized on a permanent basis for essentially educational, cultural heritage or aesthetic purposes; owns or uses tangible objects, either animate or inanimate; cares for these objects; and exhibits these objects to the general public on a regular basis through facilities that it owns or operates.
    - 1) **What types of institutions are included in the term “museum”?** If they otherwise meet these requirements, “museums” include, but are not limited to, aquariums, arboretums, art museums, botanical gardens, children’s/youth museums, general museums (those having two or more significant disciplines), historic houses/sites, history museums, natural history/anthropology museums, nature centers, planetariums, science/technology centers, specialized museums (limited to a single distinct subject), and zoological parks.
    - 2) **What does it mean to be “using a professional staff”?** An institution uses a professional staff if it employs at least one staff member, or the full-time equivalent, whether paid or unpaid, primarily engaged in the acquisition, care, or exhibition to the public of objects owned or used by the institution.
    - 3) **What does it mean to “exhibit the objects to the general public”?** An institution exhibits objects to the general public if such exhibition is a primary purpose of the institution. An institution that exhibits objects to the general public for at least 120 days a year is deemed to exhibit objects to the general public on a regular basis.

An institution that does not have the exhibition of objects as a primary purpose and/or does not exhibit objects to the public for at least 120 days a year may be determined to be eligible as a museum under certain circumstances. For more information, please see 2 C.F.R. § 3187.3.
  - (b) A public or private nonprofit agency that is responsible for the operation of a museum that meets the eligibility criteria in 1, 2, and 3(a), applying on behalf of the museum;
  - (c) A museum service organization or association whose primary purpose, as reflected in its mission, is to support museums whose primary purpose, as reflected in their mission, is African American life, art, history, and/or culture; or
  - (d) A historically black college or university, as defined by the Higher Education Act of 1965, as amended, 20 U.S.C. Section 2011, and pursuant to Executive Order 13256, dated February 12, 2002.

Native American tribal organizations may apply if they otherwise meet the above eligibility requirements.



### Eligibility of Museums Located within a Parent Organization

A museum located within a parent organization that is a State, local, or tribal government or multipurpose nonprofit entity, such as a municipality, university, historical society, foundation, or cultural center, may apply on its own behalf if the museum:

- is able to independently fulfill all the eligibility requirements listed in the above three criteria;
- functions as a discrete unit within the parent organization;
- has its own fully segregated and itemized operating budget; and
- has the authority to make the application on its own.

When any of the last three conditions cannot be met, a museum may only apply through its parent organization.

### Eligibility of Nonprofit Organization Affiliated with a Museum

IMLS may determine that a nonprofit organization that is affiliated with a museum is eligible for this program where the organization can demonstrate that it has the ability to administer the project and can ensure compliance with the terms of this Notice of Funding Opportunity and the applicable law, including the [IMLS Assurances and Certifications](#). The applicant organization must submit an agreement from the museum that details the activities that the applicant and museum will perform and binds the museum to the statements and assurances made in the grant application.

## C2. Cost Share Requirements

For Museum Grants for African American History and Culture, the requirements to provide cost share from non-federal sources differ according to the funding level requested.

Project Type	Funding Level	Cost Share Requirement
Small Project	\$5,000 - \$100,000	Cost share is not required.
Large Project	\$100,001 - \$500,000	At least 1:1 cost share from non-federal sources is required. <i>Note: If you do not include at least 1:1 cost share in your project budget, your application will be rejected from further consideration.</i>

Cost share that appears in the project budget should be carefully calculated. Recipients are expected to meet their cost share commitments.

[Click here for further information on cost share.](#)

## C3. Other Eligibility Information

Eligible applicants may submit multiple applications for support of separate and distinct projects under this announcement. Submitting applications in this grant program does not preclude organizations from applying for support of separate and distinct projects through other IMLS grant programs for which they may be eligible.

Applications involving partnerships or collaborations are welcome. When two or more eligible institutions or organizations work together on a project, one of them must meet all eligibility requirements, serve as the lead applicant, and administer the award on behalf of the other(s). If IMLS funds the project, the lead applicant will be programmatically, fiscally, and legally responsible for the award.

IMLS will not review applications from ineligible applicants. IMLS will notify each applicant whose application will not be reviewed because the organization is determined to be ineligible.

IMLS will not make awards to ineligible applicants. In order to receive an IMLS award, an organization must be eligible and be in compliance with applicable requirements.

All application materials must be received through Grants.gov by the application deadline, 11:59 p.m. U.S. Eastern Time on November 15, 2022. Late applications will not be considered for funding under this notice.

## D. Application and Submission Information

### D1. Application Package

Applicants must apply electronically through [Grants.gov Workspace](#) or a Grants.gov system-to-system solution. Use one of the following identifiers to locate the application package in [Grants.gov](#):

- Funding Opportunity Number: AAHC-FY23
- Assistance Listing Number 45.309

To request an audio recording of this announcement, call 202-653-4744. To request a paper copy of this announcement, call 202-653-4744 or email [imls-museumgrants@imls.gov](mailto:imls-museumgrants@imls.gov).

Persons who are deaf or hard of hearing (TTY Users) can contact IMLS at 202-207-7858 via 711 for TTY-Based Telecommunications Relay Service.

### D2. Content and Form of Application Submission

The Table of Application Components below will help you prepare a complete application. The links lead to more information and instructions for each application component.

Applications missing any Required Documents or Conditionally Required Documents from this list will be considered incomplete and may be rejected from further consideration. (See 2 C.F.R. § 3187.9.)

#### D2a. Table of Application Components

Component	Format	File name to use
<b>Required Documents</b> Please see the guidance in <a href="#">Section D2c</a> for more information.		
<a href="#">The Application for Federal Domestic Assistance/Short Organizational Form (SF-424S)</a>	Grants.gov form	n/a

<a href="#">IMLS Supplementary Information Form</a> (including Abstract)	Grants.gov form	n/a
<a href="#">IMLS Museum Program Information Form</a>	Grants.gov form	n/a
<a href="#">Organizational Profile</a> (one page max.)	PDF document	Organizationalprofile.pdf
<a href="#">Narrative</a> (seven pages max.)	PDF document	Narrative.pdf
<a href="#">Schedule of Completion</a> (one page per year max.)	PDF document	Scheduleofcompletion.pdf
<a href="#">Performance Measurement Plan</a> (two pages max.)	PDF document	Perfmeasurement.pdf
<a href="#">IMLS Budget Form</a>	IMLS PDF form	Budget.pdf
<a href="#">Budget Justification</a>	PDF document	Budgetjustification.pdf
<a href="#">List of Key Project Staff and Consultants</a> (one page max.)	PDF document	Projectstaff.pdf
<a href="#">Resumes of Key Project Staff and Consultants</a> (two pages each max.)	PDF document	Resumes.pdf
<b>Conditionally Required Documents</b> Please see the guidance in <a href="#">Section D2d</a> for more information.		
<a href="#">Proof of Private, Nonprofit Status</a>	PDF document	Proofnonprofit.pdf
<a href="#">Final Federally Negotiated Indirect Cost Rate Agreement</a>	PDF document	Indirectcostrate.pdf
<a href="#">Digital Products Plan</a> (two pages max.)	PDF document	Digitalproduct.pdf
<a href="#">Detailed Condition Reports and/or Conservation Treatment Proposals</a>	PDF document	Treatment.pdf

<b>Supporting Documents</b> Please see the guidance in <a href="#">Section D2e</a> for more information.		
<a href="#">Information that supplements the Narrative and supports the project description provided in the application</a>	PDF document	Supportingdoc1.pdf Supportingdoc2.pdf Supportingdoc3.pdf

## D2b. Format, Name, and Sequence of the Application Components

**Document format:** Aside from the SF-424S, the IMLS Supplementary Information Form (including Abstract), and the IMLS Museum Program Information Form, which are created in Grants.gov Workspace, all application components must be submitted as PDF documents.

**Page limits:** Note the page limits listed in the table above. IMLS will remove any additional pages and will not send them to reviewers as part of your application.

**Naming convention:** Use the naming conventions indicated in the table above. **IMPORTANT:** Attachment file names are limited to the following characters: A-Z, a-z, 0-9, underscore (\_), hyphen (-), space, period (.). If attachment file names use any other characters, the application may be rejected by Grants.gov.

**Attachment order:** In Grants.gov, attach all application components in the sequence listed in the table above. Use all available spaces in the “Attachments Form” first. Attach any additional application components using the “Other Attachment File(s)” boxes.

**Complete applications:** Use the table above as a checklist to ensure that you have created and attached all necessary application components.

## D2c. Instructions for Required Documents

### 1. The Application for Federal Domestic Assistance/Short Organizational Form (SF-424S)

The SF-424S is part of the application package that you complete in Grants.gov Workspace. [Click here for instructions on completing the SF-424S.](#)

### 2. IMLS Supplementary Information Form (including Abstract)

The IMLS Supplementary Information Form (including Abstract) is part of the application package that you complete in Grants.gov Workspace. [Click here for instructions on completing it.](#)

### 3. IMLS Museum Program Information Form

The IMLS Museum Program Information Form is part of the application package that you complete in Grants.gov Workspace. [Click here for instructions on completing it.](#)

### 4. Organizational Profile

Create a one-page Organizational Profile for the lead applicant, addressing the following, and save it as a PDF.

- Your organization’s mission or statement of purpose, noting the source, approving body, and date of the official document in which it appears.

- Your organization's governance structure. If your museum is located within a parent organization or if your organization is a nonprofit affiliated with a museum, explain the relationship.
- Your service area (i.e., communities and/or audiences served, including size, demographic characteristics, and geographic area).
- A brief history of your organization, focusing on the organizational unit that will be directly involved in carrying out the work.

If your proposal is selected for funding, the Organizational Profile may be published online, or otherwise shared, by IMLS. As such, it must not include any sensitive, proprietary, or confidential information.

## 5. Proposal Narrative

Write a Narrative that addresses the questions listed under each section heading, and save it as a PDF.

- Limit the Narrative to seven numbered pages. We will remove any additional pages, and we will not send them to reviewers as part of your application.
- Consider each Narrative question and be mindful of the review criteria as listed in [Section E1](#).
- Be clear and concise with minimal use of technical jargon and acronyms.
- Include references throughout your Narrative to any Supporting Documents that provide supplementary material.
- Make sure your organization's name appears at the top of each page.
- Use at least 0.5-inch margins on all sides and a font size of at least eleven points.

If your proposal is selected for funding, the Narrative may be published online, or otherwise shared, by IMLS. As such, it must not include any sensitive, proprietary, or confidential information.

Organize your Narrative using the section headings of Project Justification, Project Work Plan, and Project Results. Consider the Museum Grants for African American History and Culture Program goal and objective(s) you have selected ([Section A2](#)) as you develop the Narrative.

### Project Justification

- Which program goal and associated objective of Museum Grants for African American History and Culture will your project address (see [Section A2](#))?
- What need, problem, or challenge will your project address, and how was it identified? Describe how you have used demographic information, economic circumstances, condition assessments, and other relevant data from reliable sources to define the need, problem, or challenge and develop the scope for the project.
- Who is the target group for your project and how have they been involved in the planning? "Target group" refers to those who will be most immediately and positively affected by your project. Identify the number of individuals in the target group or in each target group, if you identify more than one.
- Who are the ultimate beneficiaries for this project? "Beneficiaries" refers to those who are likely to be aided in the long-term by your project. They may or may not be the same

as your “target group.” Identify the number of individuals who will benefit from your project in the long term, if reliable and defensible counts are possible. Otherwise describe the characteristics of the beneficiaries you expect to be served eventually by your project.

### **Project Work Plan**

- What specific activities will you carry out and in what sequence?
- What are the risks to the project and how will you mitigate them?
- Who will plan, implement, and manage your project?
- What time, financial, personnel, and other resources will you need to carry out the activities?

**Note:** You must include \$3,000 per year in award funds for travel to attend IMLS-designated meetings.

- How will you track your progress toward achieving your intended results?

### **Project Results**

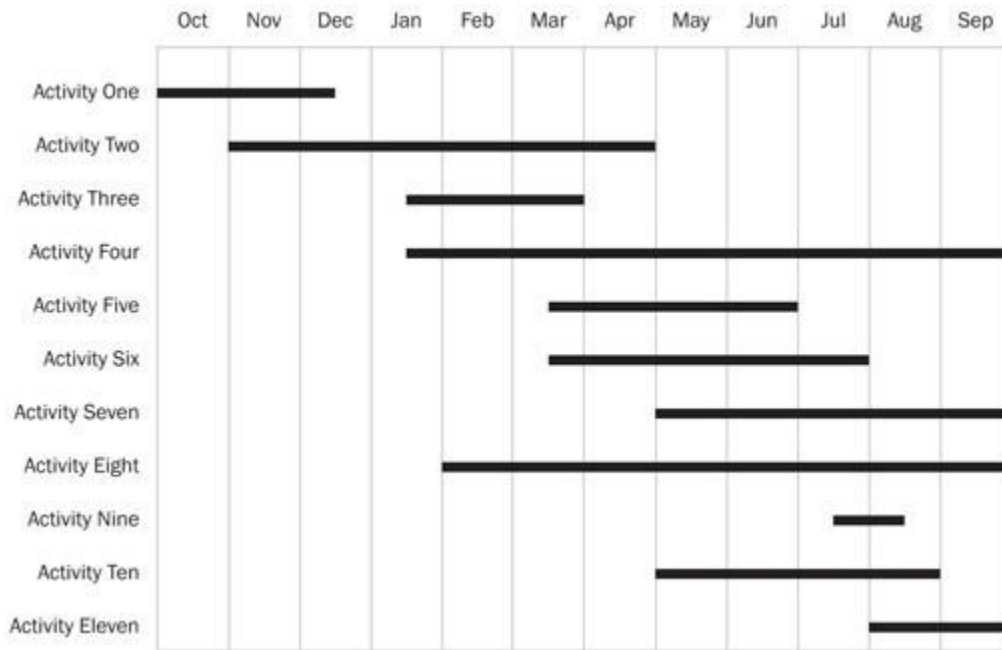
- What are your project’s intended results and how will they address the need, problem, or challenge you have identified? Be sure to address this question from the dual perspectives of advancing knowledge and understanding and ensuring that the federal investment made through this grant generates benefits to society.
- How will the knowledge, skills, behaviors, and/or attitudes of the target group change as a result of your project?
- If applicable, how will the care, condition, management, access to, or use of the museum collections and/or records that are the focus of your project improve?
- What products will result from your project?
- How will you sustain the benefit(s) of your project beyond the conclusion of the period of performance?

See [Section E1](#) for the review criteria.

Please be advised that reviewers may also choose to visit your organization's website, as listed on the SF-424S form provided with your application.

## **6. Schedule of Completion**

The Schedule of Completion should reflect each major activity identified in your application Narrative and the project dates identified on the SF-424S and the IMLS Budget Form. It should show when each major project activity will start and end. The schedule must be no longer than one page per project year. See the sample Schedule of Completion below. Save this document as a PDF.



If your proposal is selected for funding, the Schedule of Completion may be published online, or otherwise shared, by IMLS. As such, it must not include any sensitive, proprietary, or confidential information.

## 7. Performance Measurement Plan

The Performance Measurement Plan should show how you will monitor and assess your performance as a grantee from the perspectives of Effectiveness, Efficiency, Quality, and Timeliness for your overall project (see [Section A3](#)).

For each measure, identify what data you will collect from what source, the method you will use to collect it, and according to what schedule. The chart below provides sample statements for each measure and a space to record your own. [Click here for a fillable version of this chart](#) (DOCX, 25KB), which you are welcome, but not required, to use. Limit your Performance Measurement Plan to two pages and save your document as a PDF.

If your proposal is selected for funding, the Performance Measurement Plan may be published online, or otherwise shared, by IMLS. As such, it must not include any sensitive, proprietary, or confidential information.

Performance Measure	Data We Will Collect (e.g., counts, costs, weights, volumes, temperatures, percentages, hours, observations, opinions, feelings)	Source of Our Data (e.g., members of the target group, project staff, stakeholders, internal/external documents, recording devices, databases)	Method We Will Use (e.g., survey, questionnaire, interview, focus group, informal discussion, observation, assessment, document analysis)	Schedule (e.g., daily, weekly, monthly, quarterly, annually, beginning/end)
<b>Effectiveness:</b> The extent to which activities contribute to achieving the intended results	<p><i>Example:</i> At the end of each month, using a report prepared by the registrar, we will compare the cumulative count of rehoused objects against the total number proposed for the project.</p> <p><i>Example:</i> At the end of each project year, our external consultant will present results of the ongoing observation-based evaluation and compare them against our intended project results.</p>			
<b>Efficiency:</b> How well resources (e.g., funds, expertise, time) are used and costs are minimized while generating maximum value for the target group	<p><i>Example:</i> Twice per year, we will assess our expenditures for program supplies on a per-person-served basis.</p> <p><i>Example:</i> Each quarter, we will calculate the dollar value of volunteer hours contributed to the project as recorded in our online volunteer management system.</p>			
<b>Quality:</b> How well the activities meet the requirements and expectations of the target group	<p><i>Example:</i> At the beginning, the mid-point, and end of the project, we will administer a satisfaction survey to staff who have participated in the training.</p> <p><i>Example:</i> We will gather opinions about our online services through questionnaires provided to every 20<sup>th</sup> user.</p>			
<b>Timeliness:</b> The extent to which each task/activity is completed within the proposed timeframe	<p><i>Example:</i> Every six months, our Project Director will assess the fit between our proposed Schedule of Completion and actual activity completion dates.</p> <p><i>Example:</i> Each quarter, each project partner will submit to our Project Director a templated report showing their progress on meeting project milestones.</p>			

## 8. IMLS Budget Form

Download and complete the current [IMLS Budget Form](#) (PDF, 1.7MB). [Click here for instructions on completing it.](#)

## 9. Budget Justification

Write a Budget Justification to identify each expense and show the method of cost computation used to determine each dollar amount, including any that you may have consolidated and summarized on the IMLS Budget Form. Save this document as a PDF. [Click here for detailed instructions.](#)

## 10. List of Key Project Staff and Consultants

Write a one-page list of only those staff and consultants whose expertise is essential to the success of the project and save it as a PDF. Do not list all staff involved in the project. If you cannot identify key project staff by the application deadline, then list the position title(s) instead. This list must include the Project Director listed in Item 7 of the SF-424S.

## 11. Resumes of Key Project Staff and Consultants

Provide a resume of no more than two pages for each individual whose expertise is essential to the success of the project. Save all the resumes in a single PDF. You must include the resume of the Project Director listed in Item 7 of the SF-424S. If you cannot identify key project staff by the application deadline, then instead of a resume, provide position description(s) including the



qualities, range of experience, and education necessary to successfully implement and complete project activities.

[\(Back to Table of Application Components\)](#)

### D2d. Conditionally Required Documents

These are documents that may be required, depending upon the circumstances. Please see the table below.

Failure to provide a Conditionally Required Document will result in your application’s being considered incomplete, and it may be rejected from further consideration.

If you are:	Then you must provide:	Notes:
Applying as a private, nonprofit institution, as indicated by choosing “M” as the Applicant Type code in 5d of the SF-424S form	A copy of the IRS letter indicating your eligibility for nonprofit status under the applicable provision of the Internal Revenue Code of 1954, as amended.	<p>You must submit this letter with each application whether or not you have submitted it with other applications in the current year or in previous years.</p> <p>We will not accept a letter of State sales tax exemption as proof of nonprofit status.</p>
Using a federally negotiated indirect cost rate in your budget	A copy of your current Final Federally Negotiated Indirect Cost Rate Agreement.	If you do not have a current negotiated (including provisional) indirect cost rate and elect to charge a de minimis rate of 10 percent of Modified Total Direct Costs (see 2 C.F.R. part 200, including 2 C.F.R. §§ 200.1 and 200.414(f)), you do not need to provide any documentation.
Proposing to generate digital content, resources, assets, or software	<p>A Digital Products Plan (two pages max.)</p> <p>Describe the types of digital products you will create during your project and address issues relating to availability, access, and sustainability for each type.</p>	<p>See <a href="#">Guidance for Creating a Digital Products Plan</a>.</p> <p>If your proposal is selected for funding, the Digital Products Plan may be published online, or otherwise shared, by IMLS. As such, it must not include any sensitive, proprietary, or confidential information.</p>

<p>Proposing to undertake conservation treatment as part of your project</p>	<p>A document that identifies your institution’s conservation priorities and describes how they were established.</p> <p>Provide detailed condition reports and/or treatment proposals for each object, specimen, or group to be treated.</p>	<p>This document might be one or more of the following:</p> <ul style="list-style-type: none"> <li>• A <a href="#">Conservation Assessment for Preservation (CAP)</a> report</li> <li>• A <a href="#">Preservation Assistance Grant (PAG)</a> report</li> <li>• A General Conservation Survey Report (funded by a prior IMLS grant)</li> <li>• A similar survey report funded by local, state, regional, or private entities</li> <li>• A current Long-range Conservation Plan approved by the organization’s administration and/or governing body</li> </ul>
--	---	---

[\(Back to Table of Application Components\)](#)

## D2e. Supporting Documents

Applicants may submit a reasonable number of supporting documents that supplement the Narrative in support of the project description. Supporting documents should help IMLS staff and reviewers envision the project in greater detail, but they should not be used to introduce new topics nor to continue answers to the Narrative questions. Give each document a clear, descriptive title at the top of the first page. You may wish to consider the following:

- Letters of commitment from partners, consultants, or any third party that will receive grant funds or make substantial contributions towards the completion of project activities.
- Bibliography or references relevant to your proposed project design or evaluation strategy
- Letters of support from experts and stakeholders
- Relevant images that support your proposed project
- Exhibit design plans
- Reports from planning activities
- Contractor quotes
- Equipment specifications
- Products or evaluations from previously completed or ongoing projects of a similar nature
- Collections, technology, or other departmental plans for the organization as applicable to the proposed project
- Web links to relevant online materials
- Needs assessments

Applications for projects that build organizational capacity by adding new staff may include the following types of Supporting Documents:

- Position descriptions for new grant-supported staff positions not listed on the List of Key Project Staff and Consultants, including assigned duties and required qualifications
- Estimated salary and benefits documentation for the new position that reflect industry standards and prevailing wages for the local area
- Organizational chart and/or a description of the leadership and supervisory structure of your organization, showing the new positions along with existing staff

Applications for projects that support the growth and development of museum staff or interns may include the following types of Supporting Documents:

- Position descriptions included expected duties and learning outcomes for interns
- Recruitment plans, including letters of support from HBCUs or other institutions of higher education
- Training needs assessment, identifying knowledge gaps and areas of growth for museum staff
- Curriculum and learning objectives from identified training programs or career development experiences

Applications for projects that build capacity to enhance care and increase access to museum collections may include the following types of Supporting Documents:

- Summary of the scope and scale of museum collections, including baseline information on the numbers, types, and quantities of items held by the museum
- Specific benchmarks on the quantity of collection items to be processed, cataloged, and/or digitized in the proposed project
- Description of the intended audience that will gain access to the museum collection, and how the improved access will meet the needs of that audience
- Museum collections management policy or similar type of document approved by the governing board and/or leadership of your museum

[\(Back to Table of Application Components\)](#)

## **D3. Registration Requirements**

Before submitting an application, an applicant organization must have a Unique Entity Identifier (UEI) number; a current and active System for Award Management (SAM) registration; and an active Grants.gov registration with an approved Authorized Organization Representative (AOR). Check materials and registrations well in advance of the application deadline to ensure that they are accurate, current, and active.

### **D3a. Unique Entity Identifier**

The Unique Entity Identifier (UEI) number is a non-proprietary alphanumeric identifier assigned to all entities (public and private companies, individuals, institutions, or organizations) who register to do business with the Federal Government. The UEI has replaced the D-U-N-S® Number and is requested in, and assigned by, the System for Award Management (SAM). Award recipients must inform any

subrecipients that the recipient may not make a subaward unless the subrecipient has also obtained a UEI.

### **D3b. System for Award Management (SAM)**

The System for Award Management (SAM) is a federal repository that centralizes information about grant applicants and recipients. There is no fee to register with SAM. [Click here to learn more about SAM registration.](#)

### **D3c. Grants.gov**

Grants.gov is the centralized location for grant seekers to find and apply for federal funding opportunities.

Applicants must register with Grants.gov prior to submitting an application package. The multistep registration process generally cannot be completed in a single day. If your organization is not already registered, allow several weeks before the application deadline to complete this one-time process.

**Do not wait until the day of the application deadline to register.**

The Grants.gov user ID and password obtained during the registration process are required to submit an application when it is complete.

[Click here to learn more about Grants.gov registration and tips for using Grants.gov.](#)

## **D4. Submission Dates and Times**

**All organizations must submit their applications for funding using Grants.gov Workspace.** Do not submit through email or postal mail to IMLS.

For the Museum Grants for African American History and Culture Program, Grants.gov will accept applications through 11:59 p.m. U.S. Eastern Time on November 15, 2022.

Under certain circumstances, IMLS allows an extension of grant application deadlines for adversely affected applicant organizations that are located in counties listed in Emergency Declarations and/or Major Disaster Declarations. See [Application Deadlines](#) for further information.

IMLS strongly recommends that applicants obtain a UEI number, register with SAM and Grants.gov, and complete and submit applications early (see [Section D3](#)). IMLS makes grants only to eligible applicants that submit applications, including attachments, through Grants.gov, on or before the deadline, as indicated by the date stamp generated by Grants.gov.

Visit [Grants.gov Support](#), email [support@grants.gov](mailto:support@grants.gov), or call Grants.gov Applicant Support at 1-800-518-4726 for technical assistance. Grants.gov Applicant Support is available 24 hours a day, seven days a week, except for federal holidays.

Grants.gov will generate a series of emails confirming the status of each application. Applicants can check the status of their application(s) in Grants.gov by using "[Track My Application](#)." For further details, visit [Check Application Status](#) at Grants.gov.

## **D5. Intergovernmental Review**

This funding opportunity is not subject to intergovernmental review per Exec. Order No. 12372.

## D6. Funding Restrictions

### D6a. Allowable and Unallowable Costs

Applicants may use IMLS funds and cost share only for allowable costs as found in IMLS and OMB government-wide cost-principle rules. Please consult 2 C.F.R. part 200 and 2 C.F.R. part 3187 for additional guidance on allowable costs.

The following list includes some examples of generally allowable costs, both for IMLS funds and for cost share under this announcement:

- personnel salaries, wages, and fringe benefits
- travel expenses for key project staff and consultants
- materials, supplies, software, and equipment related directly to project activities
- adaptive and/or assistive technologies and other resources and services to improve accessibility for persons with disabilities
- equipment to improve collections storage and exhibit environments
- third-party costs
- publication design and printing
- program evaluation
- staff and volunteer training
- paid internships/fellowships
- indirect or overhead costs

Applicants must explain all proposed expenses in the Budget Justification.

The following list includes some examples of unallowable costs, both for IMLS funds and for cost share under this announcement:

- general fundraising costs, such as development office staff or other staff time devoted to general fundraising
- general operating support
- acquisition of collections (see 2 C.F.R. § 3187.15(b))
- general advertising or public relations costs designed solely for promotional activities other than those related to the specific project
- construction or renovation of facilities (generally, any activity involving the construction trades is not an allowable cost)
- social activities, ceremonies, receptions, or entertainment
- research projects (see 2 C.F.R. § 200.1)

*If you have questions about whether specific activities are allowable, contact IMLS staff for guidance.*

## D6b. Costs for Third Parties

When a project requires the payment of federal funds to third parties (such as partners, consultants, collaborators, vendors, and/or service providers), it is the applicant organization's responsibility to determine whether a third party should be characterized as a subrecipient or a contractor. The characterization must be reflected in the terms of each agreement made with each third party. (See 2 C.F.R. § 200.1 for definitions of *contract*, *contractor*, *subaward*, and *subrecipient*; see also 2 C.F.R. § 200.331 (Subrecipient and contractor determinations).) IMLS grant funds may not be provided to any federal agency serving as a third party.

## D6c. Indirect Costs

An applicant can choose to:

- use a rate not to exceed their current indirect cost rate already negotiated with a federal agency;
- use an indirect cost rate proposed to a federal agency for negotiation, but not yet finalized, as long as it is finalized by the time of the award;
- use a rate not to exceed 10 percent of the Modified Total Direct Costs (MTDC) if the organization currently does not have a federally negotiated indirect cost rate and is not subject to other requirements (e.g., for States and local governments); or
- not include any indirect costs.

[Click here for further information on indirect costs.](#)

# E. Application Review Information

## E1. Review Criteria

IMLS instructs reviewers to evaluate applications according to the review criteria listed in this section and to consider all Required, Conditionally Required, and Supporting Documents as listed in [Section D2a](#).

Cost share is an eligibility criterion and is not considered in the review of applications. Cost share requirements for this grant program are addressed in [Section C2](#).

### Project Justification

- Has the applicant selected an appropriate program goal and one or more associated objectives of Museum Grants for African American History and Culture described in [Section A2](#)?
- How well has the applicant used relevant data and best practices to describe the need, problem, or challenge to be addressed?
- Has the applicant appropriately defined the target group(s) and beneficiaries, as applicable, for this work?
- Have the target group and other project stakeholders been involved appropriately in planning the project?
- If applicable, are the collections and/or records that are the focus of the project and their current condition described and quantified in enough detail?

### **Project Work Plan**

- Are the proposed activities informed by relevant theory and practice?
- Are the goals, assumptions, and risks clearly stated?
- Do the identified staff, partners, consultants, and service providers possess the experience and skills necessary to complete the work successfully?
- Are the time, financial, personnel, and other resources identified appropriate for the scope and scale of the project?
- Is the proposed Performance Measurement Plan likely to generate the required measures of Effectiveness, Efficiency, Quality, and Timeliness?
- If present, does the Digital Products Plan reflect appropriate practices and standards for creating and managing the types of digital products proposed?
- Will the proposed methods for tracking the project's progress toward achieving the intended results allow course adjustments when necessary and result in reliable and measurable information about the results of the project?

### **Project Results**

- Are the project's intended results clearly articulated, realistic, meaningful, and linked to the need, problem, or challenge addressed by the project?
- Is the plan to effect meaningful change in knowledge, skills, behaviors, and/or attitudes solidly grounded and appropriately structured?
- If applicable, will the care, condition, management, access to, or use of the museum collections and/or records improve as a result of the project?
- Is it clear that the federal investment made through this grant will generate identifiable benefits to society?
- Will the products created by the project be made available and accessible to the target group?
- Is the plan to sustain the benefits of the project beyond the conclusion of the period of performance reasonable and practical?

## **E2. Review and Selection Process**

IMLS uses a peer review process to evaluate all complete applications from eligible institutions. Reviewers are professionals in the field with relevant knowledge and expertise in the types of project activities identified in the applications. IMLS instructs reviewers to evaluate applications according to the review criteria. Peer reviewers must comply with IMLS's federal ethics and conflicts of interest requirements.

The Director takes into account the input provided by the review process and makes final funding decisions consistent with the purposes of the agency's mission and programs.

## **E3. Designated Integrity and Performance System**

IMLS, prior to making a federal award with a total amount of federal share greater than the simplified acquisition threshold (currently \$250,000 but periodically adjusted), is required to review

and consider any information about the applicant that is in the designated integrity and performance system accessible through SAM (currently FAPIIS) (see 41 U.S.C. § 2313 and 41 U.S.C. § 134).

An applicant, at its option, may review information in the designated integrity and performance systems accessible through SAM and comment on any information about itself that a federal awarding agency previously entered.

IMLS will consider any comments by the applicant, in addition to the other information in the designated integrity and performance system, in considering the applicant's integrity, business ethics, and record of performance under federal awards when completing the review of risk posed by applicants as described in 2 C.F.R. § 200.206 (Federal awarding agency review of risk posed by applicants).

## **E4. Anticipated Announcement and Award Dates**

IMLS will not release information about the status of an application until the applications have been reviewed and all deliberations are concluded. IMLS expects to notify both successful and unsuccessful applicants of the final decisions by email in June 2023.

## **F. Award Administration Information**

### **F1. Federal Award Notices**

IMLS will notify both successful and unsuccessful applicants of funding decisions by email.

### **F2. Administrative and National Policy Requirements**

Organizations that receive IMLS grants or cooperative agreements are subject to [2 C.F.R. part 200 Uniform Administrative Requirements, Cost Principles, and Audit Requirements for Federal Awards](#), [2 C.F.R. part 3187](#), the [IMLS General Terms and Conditions for IMLS Discretionary Grant and Cooperative Agreement Awards](#) (PDF, 459KB), and the [IMLS Assurances and Certifications](#). Organizations that receive IMLS funding must be familiar with these requirements and comply with applicable law.

Applicants for federal funds must certify that they are responsible for complying with certain nondiscrimination, debarment and suspension, drug-free workplace, and lobbying laws. These are set out in more detail, along with other requirements, in the [IMLS Assurances and Certifications](#). By submitting the application, which includes the [IMLS Assurances and Certifications](#), applicants certify that they are in compliance with these requirements and that they will maintain records and submit any reports that are necessary to ensure compliance. Failure to comply with these statutory and regulatory requirements may result in the suspension or termination of an award and require that the recipient return funds to the government. For information about award termination, please see the [IMLS General Terms and Conditions for IMLS Discretionary Grant and Cooperative Agreement Awards](#) and 2 C.F.R. § 200.340.

### **F3. Reporting**

Recipients must comply with the following reporting requirements.

Interim and final financial and performance reports are due according to the reporting schedule that is part of the official award notification. Grantees must submit reports using the IMLS electronic grants management system. In support of the agency's commitment to open government, interim



and final performance reports may be made accessible on the IMLS website to engage the public in communities of practice and to inform application development and grant-making strategies.

For details, please see the [Manage Your Award: Grant Administration](#) page on the IMLS website.

Grantees must also comply with 2 C.F.R. §§ 180.335 and 180.350 and 2 C.F.R. part 3185 with respect to providing information regarding all debarment, suspension, and related offenses, as applicable.

If the federal share of the federal award is more than \$500,000 over the period of performance, recipients should refer to the reporting requirements reflected in 2 C.F.R. part 200, Appendix XII – Award Term and Condition for Recipient Integrity and Performance Matters (see also 2 C.F.R. §§ 200.113 (Mandatory disclosures) and 200.211(c)(iii) (Information contained in a Federal award)).

## G. Contacts

[Click here for IMLS staff contact information for this program.](#) IMLS staff are available by phone and email to answer programmatic and administrative questions relating to this grant program. IMLS staff also host webinars to introduce potential applicants to funding opportunities. [Click here for a list of webinars and instructions for accessing them.](#)

Visit the [Federal Service Desk](#) or call 1-866-606-8220 for questions about registering or renewing your registration with login.gov or SAM.gov. Hours of operation are Monday through Friday, 8 a.m. to 8 p.m. Eastern Time.

Visit [Grants.gov Support](#), email [support@grants.gov](mailto:support@grants.gov), or call Grants.gov Applicant Support at 1-800-518-4726 for assistance with software issues, registration issues, and technical problems. Grants.gov Applicant Support is available 24 hours a day, seven days a week, except for federal holidays.

Be sure to obtain a case number when calling the Federal Service Desk or Grants.gov for support.

## H. Other Information

### H1. Acknowledging IMLS support

Grantees must include an acknowledgement of IMLS support in all grant products, publications, websites, and presentations developed with IMLS funding. All work products should reference IMLS and include the associated grant award number(s). [Click here for the Grantee Communications Kit](#), which provides guidance for fulfilling these requirements.

### H2. Disclosure of Information in Applications

IMLS may share grant applications, products, and reports to further the mission of the agency and the development of museum, library, and information services.

As a general practice, and except for information that is privacy-protected, information contained in IMLS applications that receive funding may be made public. Please identify any information you deem confidential and/or proprietary and seek to have protected.

### H3. Conflict of Interest Requirements

As non-federal entities, award recipients must follow IMLS conflict of interest policies for federal awards. [Click here for more information about IMLS conflict of interest requirements.](#)

## H4. Additional Information about IMLS

Visit the [IMLS website](#) for additional information on IMLS and IMLS activities.

## H5. IMLS Obligations to Make Awards

IMLS is not obligated to make any federal award or commitment as a result of this announcement.

## H6. Peer Review

Any individual who is interested in serving as a peer reviewer is welcome to enter their contact information, identify their experience and expertise, and upload a resume through the IMLS [online reviewer application portal](#). IMLS staff will notify the individuals who are identified as potential reviewers by email prior to the next review period to confirm availability.

## H7. Copyright Information

Awardees may copyright any work that is subject to copyright and was developed, or for which ownership was acquired, under a federal award. IMLS reserves a royalty-free, nonexclusive, and irrevocable right to reproduce, publish, or otherwise use the work for federal purposes, and to authorize others to do so. (For additional information, please see 2 C.F.R. § 200.315 (Intangible property).).

## H8. Application Completion Time

Complete applications include the elements listed in the Table of Application Components in [Section D2a](#). IMLS estimates the average amount of time needed for one applicant to complete the narrative portion of this application to be 35 hours. This includes the time for reviewing instructions, searching existing data sources, gathering and maintaining the data needed, and writing and reviewing the answers.

IMLS estimates that it will take an average of 15 minutes per response each for the IMLS Supplementary Information Form (including Abstract) and the IMLS Museum Program Information Form and three hours per response for the IMLS Budget Form.

IMLS welcomes your suggestions for improving this collection of information and for making it as easy to use as possible. Send comments regarding this burden estimate or any other aspect of this collection of information, including suggestions for reducing this burden, to [grantsadmin@imls.gov](mailto:grantsadmin@imls.gov). Please note that applicants are not required to respond to any collection of information unless it displays a currently valid U.S. Office of Management and Budget (OMB) control number.

## H9. PRA Clearance Number

OMB Control No. 3137-0095, Expiration date: 07/31/2024

## Appendix One – IMLS Assurances and Certifications

As a federal agency, IMLS is required to obtain from all applicants certifications, including those regarding Nondiscrimination, Debarment and Suspension, Federal Debt Status, and Drug-Free Workplace. Applicants requesting more than \$100,000 in grant funds must also certify regarding lobbying activities and may be required to submit a “Disclosure of Lobbying Activities” form (Standard Form LLL). Some applicants will be required to certify that they will comply with other

federal statutes that pertain to their particular situation. These requirements are incorporated in the Assurances Statement below. The authorized representative must review the statement and provide the certification in item 9 on the SF-424S.

### **Assurances Statement**

By submitting the application, the authorized representative, on behalf of the applicant, assures and certifies that, should a federal award be made, the applicant will comply with the statutes outlined below and all related IMLS regulations (for example, see 2 C.F.R. Chapter XXXI and 45 C.F.R. Chapter XI). These assurances are given in connection with any and all financial assistance from IMLS after the date this form is signed but may include payments after this date for financial assistance approved prior to this date. These assurances shall obligate the applicant for the period during which the federal financial assistance is extended. The applicant recognizes and agrees that any such assistance will be extended in reliance on the representations and agreements made in these assurances and that the United States Government has the right to seek judicial enforcement of these assurances, which are binding on the applicant, its successors, transferees, and assignees, and on the authorized representative whose signature appears on the application form.

## **Certifications Required of All Applicants**

### **Financial, Administrative, and Legal Accountability**

The authorized representative, on behalf of the applicant, certifies that the applicant has legal authority to apply for federal assistance and the institutional, managerial, and financial capability (including funds sufficient to pay the non-federal share of project costs) to ensure proper planning, management, reporting, recordkeeping, and completion of the project described in this application.

The authorized representative, on behalf of the applicant, certifies that the applicant will cause to be performed the required financial and compliance audits in accordance with applicable law. The authorized representative, on behalf of the applicant, certifies that the applicant will comply with the provisions of applicable OMB Circulars and regulations.

### **Nondiscrimination**

The authorized representative, on behalf of the applicant, certifies that the applicant will comply with the following nondiscrimination statutes and their implementing regulations:

1. Title VI of the Civil Rights Act of 1964, as amended (42 U.S.C. § 2000 *et seq.*), which prohibits discrimination on the basis of race, color, or national origin (note: as clarified by Exec. Order No. 13166, the applicant must take reasonable steps to ensure that limited English proficient (LEP) persons have meaningful access to the applicant's programs (see IMLS guidance at 68 Federal Register 17679, April 10, 2003));
2. Section 504 of the Rehabilitation Act of 1973, as amended (29 U.S.C. § 701 *et seq.*, including § 794), which prohibits discrimination on the basis of disability (note: IMLS applies the regulations in 45 C.F.R. part 1181 in determining compliance with Section 504 as it applies to recipients of federal assistance);
3. Title IX of the Education Amendments of 1972, as amended (20 U.S.C. §§ 1681–1689), which prohibits discrimination on the basis of sex in education programs;
4. The Age Discrimination in Employment Act of 1975, as amended (42 U.S.C. § 6101 *et seq.*), which prohibits discrimination on the basis of age; and

5. The requirements of any other nondiscrimination statute(s) which may apply to the application.

### **Debarment and Suspension**

The applicant shall comply with 2 C.F.R. part 3185 and 2 C.F.R. part 180, as applicable. The authorized representative, on behalf of the applicant, certifies to the best of his or her knowledge and belief that neither the applicant nor any of its principals:

1. are presently excluded or disqualified;
2. have been convicted within the preceding three years of any of the offenses listed in 2 C.F.R. § 180.800(a) or had a civil judgment rendered against it or them for one of those offenses within that time period;
3. are presently indicted for or otherwise criminally or civilly charged by a governmental entity (federal, state, or local) with commission of any of the offenses listed in 2 C.F.R. § 180.800(a); or
4. have had one or more public transactions (federal, state, or local) terminated within the preceding three years for cause or default.

Where the applicant is unable to certify to any of the statements in this certification, the authorized representative, on behalf of the applicant, shall attach an explanation to the application.

The applicant, as a primary tier participant, is required to comply with 2 C.F.R. part 180 (Subpart C) (Responsibilities of Participants Regarding Transactions Doing Business with Other Persons) as a condition of participation in the award. The applicant is also required to communicate the requirement to comply with 2 C.F.R. part 180 (Subpart C) (Responsibilities of Participants Regarding Transactions Doing Business with Other Persons) to persons at the next lower tier with whom the applicant enters into covered transactions.

As noted in the preceding paragraph, applicants who plan to use IMLS awards to fund contracts should be aware that they must comply with the communication and verification requirements set forth in the above Debarment and Suspension provisions.

### **Federal Debt Status**

The authorized representative, on behalf of the applicant, certifies to the best of his or her knowledge and belief that the applicant is not delinquent in the repayment of any federal debt.

### **Drug-Free Workplace**

The authorized representative, on behalf of the applicant, certifies, as a condition of the award, that the applicant will or will continue to provide a drug-free workplace by complying with the requirements in 2 C.F.R. part 3186 (Requirements for Drug-Free Workplace (Financial Assistance)). In particular, the recipient must comply with drug-free workplace requirements in Subpart B (or Subpart C, if the recipient is an individual) of 2 C.F.R. part 3186, which adopts the Government wide implementation (2 C.F.R. part 182) of the Drug-Free Workplace Act of 1988 (41 U.S.C. §§ 8101–8106). This includes, but is not limited to: making a good faith effort, on a continuing basis, to maintain a drug-free workplace; publishing a drug-free workplace statement; establishing a drug-free awareness program for employees; taking actions concerning employees who are convicted of violating drug statutes in the workplace; and identifying (either at the time of application or upon award, or in documents kept on file in the recipient's offices) all known workplaces under federal awards.

### **Trafficking in Persons**

The authorized representative, on behalf of the applicant, certifies, as a condition of the award, that the applicant will comply with the trafficking in persons requirements that are set out in the General Terms and Conditions for IMLS Discretionary Awards (2 C.F.R. § 175.15 (Award Term)).

### **Certification Regarding Lobbying Activities**

(Applies to Applicants Requesting Funds in Excess of \$100,000) (31 U.S.C. § 1352)

The authorized representative certifies, to the best of his or her knowledge and belief, that:

- (a) No federal appropriated funds have been paid or will be paid, by or on behalf of the authorized representative, to any person for influencing or attempting to influence an officer or employee of an agency, a Member of Congress, an officer or employee of Congress, or an employee of a Member of Congress in connection with the awarding of any federal contract, the making of any federal grant, the making of any federal loan, the entering into of any cooperative agreement, and the extension, continuation, renewal, amendment, or modification of any federal contract, grant, loan, or cooperative agreement.
- (b) If any funds other than federal appropriated funds have been paid or will be paid to any person (other than a regularly employed officer or employee of the applicant, as provided in 31 U.S.C. § 1352) for influencing or attempting to influence an officer or employee of any agency, a Member of Congress, an officer or employee of Congress, or an employee of a Member of Congress in connection with this federal contract, grant, loan, or cooperative agreement, the authorized representative shall complete and submit Standard Form LLL, "Disclosure of Lobbying Activities," in accordance with its instructions.
- (c) The authorized representative shall require that the language of this certification be included in the award documents for all subawards at all tiers (including subcontracts and contracts under grants, loans, and cooperative agreements) and that all subrecipients shall certify and disclose accordingly.

This certification is a material representation of fact upon which reliance is placed when the transaction is made or entered into. Submission of this certification is a prerequisite for making or entering into the transaction imposed by 31 U.S.C. § 1352. Any person who fails to file the required certification shall be subject to a civil penalty of not less than \$10,000 and not more than \$100,000 for each such failure.

### **General Certification**

The authorized representative, on behalf of the applicant, certifies that the applicant will comply with all applicable requirements of all other federal laws, executive orders, regulations, and policies governing the program.

## **Certifications Required for Certain Projects**

The following certifications are required if applicable to the project for which an application is being submitted. Applicants should be aware that additional federal certifications, not listed below, might apply to a particular project.

### **Subawards**

Under IMLS regulations at 2 C.F.R. § 3187.14, a recipient may not make a subaward unless expressly authorized by IMLS. A recipient may contract for supplies, equipment, and services, subject to applicable law, including but not limited to applicable Office of Management and Budget Uniform Administrative Requirements, Cost Principles, and Audit Requirements for Federal Awards set forth in 2 C.F.R. part 200.

### **Native American Human Remains and Associated Funerary Objects**

The authorized representative, on behalf of the applicant, certifies that the applicant will comply with the provisions of the Native American Graves Protection and Repatriation Act of 1990 (25 U.S.C. § 3001 *et seq.*), which applies to any organization that controls or possesses Native American human remains, associated funerary objects and/or cultural items, and which receives federal funding, even for a purpose unrelated to the Act.

### **Historic Properties**

The authorized representative, on behalf of the applicant, certifies that the applicant will assist the awarding agency in ensuring compliance with Section 106 of the National Historic Preservation Act of 1966, as amended (54 U.S.C. § 306101 *et seq.*), Exec. Order No. 11593, and any related applicable preservation laws.

### **Environmental Protections**

The authorized representative, on behalf of the applicant, certifies that the project will comply with environmental standards, including the following:

- a. institution of environmental quality control measures under the National Environmental Policy Act of 1969, as amended (42 U.S.C. § 4321 *et seq.*) and Exec. Order No. 11514;
- b. notification of violating facilities pursuant to Exec. Order No. 11738;
- c. protection of wetlands pursuant to Exec. Order No. 11990, as amended by Exec. Order No. 12608;
- d. evaluation of flood hazards in floodplains in accordance with Exec. Order No. 11988, as amended (see Exec. Order No. 12148);
- e. assurance of project consistency with the approved state management program developed under the Coastal Zone Management Act of 1972, as amended (16 U.S.C. § 1451 *et seq.*);
- f. conformity of federal actions to State (Clean Air) Implementation Plans under Section 176(c) of the Clean Air Act of 1955, as amended (42 U.S.C. § 7401 *et seq.*);
- g. protection of underground sources of drinking water under the Safe Drinking Water Act of 1974, as amended (42 U.S.C. § 300f *et seq.*); and
- h. protection of endangered species under the Endangered Species Act of 1973, as amended (16 U.S.C. § 1531-1543).

The authorized representative, on behalf of the applicant, certifies that the project will comply with the Wild and Scenic Rivers Act of 1968, as amended (16 U.S.C. § 1271 *et seq.*), related to protecting components or potential components of the national wild and scenic rivers system.

The authorized representative, on behalf of the applicant, certifies that the applicant will comply with the flood insurance purchase requirements of the Flood Disaster Protection Act of 1973, as

amended (42 U.S.C. § 4001 *et seq.*), which requires recipients in a special flood hazard area to participate in the program and to purchase flood insurance if the total cost of insurable construction and acquisition is \$10,000 or more, or as otherwise designated.

### **Research on Human Subjects**

The authorized representative, on behalf of the applicant, certifies that the project will comply with 45 C.F.R. part 46 regarding the protection of human subjects involved in research, development, and related activities supported by this award of assistance.

### **Research on Animal Subjects**

The authorized representative, on behalf of the applicant, certifies that the project will comply with the Animal Welfare Act of 1966, as amended (7 U.S.C. § 2131 *et seq.*) pertaining to the care, handling, and treatment of warm-blooded animals held for research, teaching, or other activities supported by this award of assistance.

For further information on these certifications, contact IMLS at 955 L'Enfant Plaza North, SW, Suite 4000, Washington, DC, 20024-2135.

## **Appendix Two – Guidance for Required Registrations**

### **Acquiring a Unique Entity Identifier**

Until April 2022, all non-federal entities were required to obtain a Dun and Bradstreet Data Universal Numbering System (D-U-N-S®) Number in order to apply for, receive, and report on federal awards. The Unique Entity Identifier (UEI) has replaced the D-U-N-S® Number and will be requested in, and assigned by, the System for Award Management (SAM). Applicants with active SAM registrations can find their assigned UEI in their SAM records. Applicants without active SAM registrations will receive a UEI when they register in SAM.

For more information about the UEI, visit [gsa.gov/entityid](https://gsa.gov/entityid).

### **Registering with SAM**

The System for Award Management (SAM) is a federal repository that centralizes information about grant applicants and recipients and is free to all users. Applicants must be registered with SAM before registering with Grants.gov. [Click here to learn how to check on an organization's registration status in SAM.](#)

Representatives of organizations that must register with SAM for the first time must begin by creating a SAM user account through [login.gov](https://login.gov). [Click here to access instructions and FAQs.](#) Then proceed to the registration process.

IMLS recommends that applicants allow several weeks to complete the SAM registration and to secure a CAGE Code.

Each applicant and recipient must maintain an active SAM registration with current information at all times during which it has an active award or an application under consideration by IMLS. IMLS may not make an award to an applicant until the applicant has complied with all applicable Unique Entity Identifier and SAM requirements and, if an applicant has not fully complied with the requirements by the time IMLS is ready to make a federal award, IMLS may determine that the applicant is not qualified to receive a federal award and use that determination as a basis for making an award to another applicant.

Applicants and recipients must renew their registrations in SAM at least every 12 months—and sooner if their information changes. An expired registration will prevent an organization from submitting applications via Grants.gov and receiving awards or payments. Grant payments will be made to the bank account that is associated with the organization’s SAM registration.

## Registering with Grants.gov

Grants.gov is a website owned and operated by the Federal Government and is free to all users. Applicants must register with Grants.gov before submitting an application to IMLS. [Click here to learn more about the multistep registration process](#). Applicants should make sure that their SAM registration is current and active before registering with Grants.gov. Allow several weeks to complete the Grants.gov registration.

After an organization registers with Grants.gov and creates an Organizational Applicant Profile, the request for the organization’s Grants.gov roles and access is sent to the EBiz POC. The EBiz POC will then log into Grants.gov and assign the appropriate roles to individuals within the organization. This will include the Authorized Organization Representative (AOR) which will give permission to complete and submit applications on behalf of the organization. [Click here for more detailed instructions for creating a profile on Grants.gov](#).

Designating more than one Authorized Organization Representative (AOR) when registering in Grants.gov will help avoid last-minute crises in the event that a single AOR is unavailable when the organization is ready to submit the application. It is also important to update the contact information and password in Grants.gov whenever an AOR changes.

Visit [Grants.gov Support](#), email [support@grants.gov](mailto:support@grants.gov), or call Grants.gov Applicant Support at 1-800-518-4726 for technical assistance. Grants.gov Applicant Support is available 24 hours a day, seven days a week, except for federal holidays. [Click here for Grants.gov Applicant FAQs](#) with links to additional applicant resources.

## Working with Grants.gov Workspace

Grants.gov applicants apply online using Workspace. Workspace is a shared, online environment where members of a grant team may simultaneously access and edit different forms within an application. For each funding opportunity, applicants can create individual copies of a workspace to complete an application. [Click here for an overview of Grants.gov Workspace](#) with links to interactive graphics, videos, and Help Articles.

# Appendix Three – Guidance for Completing Forms and Other Application Components

## Grants.gov SF-424S Form

The SF-424S Form, or the Application for Federal Domestic Assistance/Short Organizational Form, is part of the application package downloaded from Grants.gov.

### Items 1 through 4

These items are automatically populated by Grants.gov.



## Item 5. Applicant Information

- a. **Legal Name:** Enter your organization's legal name as it appears in your SAM registration. This is the organization with the authority to apply directly for funding in this program. If you have an organizational unit that will be carrying out the project, be sure that it is specified as the organizational unit on the IMLS Supplementary Information Form (including Abstract).
- b. **Address:** Enter your legal applicant's address as it appears in your SAM registration.
- c. **Web Address:** Enter your web address.
- d. **Type of Applicant:** Select the code that best characterizes your organization from the menu in the first dropdown box. Leave the other boxes blank.
- e. **Employer/Taxpayer Identification Number (EIN/TIN):** Enter the EIN or TIN assigned to your organization by the Internal Revenue Service.
- f. **Organizational UEI:** Enter your organization's Unique Entity Identifier (UEI). If your organization's SAM registration is active, you can find your assigned UEI in your SAM record. If you cannot locate your UEI, contact the Federal Service Desk at [www.fsd.gov](http://www.fsd.gov) or 1-866-606-8220.
- g. **Congressional District:** Enter your organization's congressional district. Use the following format: two-letter state abbreviation, followed by a hyphen, followed by a zero, followed by the two-digit district number. For example, if the organization is located in the 5th Congressional District of California, enter "CA-005." For the 12th Congressional District of North Carolina, enter "NC-012." For states and territories with "At Large" Congressional Districts—that is, one representative or delegate represents the entire state or territory—use "001," e.g., "VT-001."

If your organization does not have a congressional district (e.g., it is located in a U.S. territory that does not have districts), enter "00-000." To determine your organization's district, [click here to visit the House of Representatives website](#) and use the "Find Your Representative" tool.

## Item 6. Project Information

- a. **Project Title:** Enter a brief descriptive title for your project. IMLS may use this title for public information purposes.
- b. **Project Description:** Enter a brief description (about 120 words) of your project. Tell us about the purpose of the project, the activities to be performed, the deliverables and expected outcomes, and the intended beneficiaries. Use clear language that can be understood by readers who might not be familiar with the discipline or subject area.
- c. **Proposed Project Start Date/End Date:** Enter the start date and end date of the proposed period of performance in the format mm/dd/yyyy. The project period begins on the first day of the month in which project activities start and ends on the last day of the month in which these activities are completed. Refer to [Section B](#) of this Notice of Funding Opportunity to determine when your project can begin.

## Item 7. Project Director

The Project Director is the person who will have primary responsibility for carrying out your project's activities. Enter the requested information for this individual here.

*IMLS requires that the Project Director be a different person than the Authorized Representative.*

### **Item 8. Primary Contact/Grants Administrator**

The Primary Contact/Grants Administrator is the person who has primary responsibility for administering the award. Enter the requested information for this individual here. If the Primary Contact/Grants Administrator is the same as the Authorized Representative, please still complete both Items 8 and 9.

In some organizations this individual may be the same as the Project Director. If this is the case, check the box and skip to Item 9.

### **Item 9. Authorized Representative**

The Authorized Representative is the person who has the authority to legally bind your organization. Enter the requested information for this individual here. **The Authorized Representative cannot be the same person as the Project Director.** By checking the “I Agree” box at the top of Item 9, this individual certifies the applicant’s compliance with the [IMLS Assurances and Certifications](#) and any other relevant federal requirements.

The “Signature of Authorized Representative” and “Date Signed” boxes will be automatically populated by Grants.gov upon submission of the application. This will be the person whose name was listed as your organization’s authorized representative when you registered with Grants.gov. Please note that this name might not be the same as the name and other information you entered in Item 9 above; however, the person whose name appears in the “Signature of Authorized Representative” box must have authorization from your organization to submit this application on behalf of your organization.

Submission of the electronic application acknowledges that your organization certifies compliance with relevant federal requirements, including but not limited to the [IMLS Assurances and Certifications](#), to the same extent as the signature does on a paper application.

## **IMLS Supplementary Information Form (including Abstract)**

This is a dynamic form, so your answers to certain questions will determine what questions you see next.

### **Applicant Information**

Does the legal applicant identified on the SF-424S have an organizational unit that will perform the activities described in the application?

- If your organization has a parent organization, such as a university or a unit of state or local government, or cannot apply for grants on its own behalf (see [Section C1](#)), check YES.
- If your organization, on its own, meets the eligibility criteria for the grant program to which you are applying, check NO.

### **Funding Request**

IMLS funds requested: Enter the amount in dollars sought from IMLS.

Cost share/match amount: Enter the amount of non-federal funding you are providing. [Click here for further information on cost share.](#)

(See [Sections B, C2](#), and [C3](#) for information about the two funding levels in this grant program.)

### **Indirect Cost Rate**

Select one option for calculating and including indirect costs in your project budget.

### Audience(s) Served

Select the primary audience(s) to be served by the activities described in the application. Choose no more than three. If you choose General Population, you may not choose any others.

### Abstract

Write an Abstract of no more than 3,000 characters in a concise narrative format for experts as well as a general audience, and paste it into the block provided. If your proposal is selected for funding, the Abstract may be published online, or otherwise shared, by IMLS. As such, it must not include any sensitive, proprietary, or confidential information.

Address the following:

- Identify the lead applicant and, if applicable, any collaborators.
- Describe the need, problem, or challenge your project will address, and how it was identified.
- List the high-level activities you will carry out and identify the associated time frame.
- Identify who or what will benefit from your project.
- Specify your project's intended results.
- Describe how you will measure your success in achieving your intended results.

At the end of the Abstract text, list from one to eight keywords that best characterize your project from the options listed in [Appendix Seven](#). Please separate your keywords with commas and note they will count toward your Abstract character count. IMLS may use these keywords as search terms in its compilations describing the agency's grantmaking and/or provide them as tools to help applicants, other awardees, and the public understand more about what IMLS supports.

## IMLS Museum Program Information Form

Sections of this form are dynamic, so your answers to certain questions will determine what questions you see next.

**Section 1. Organizational Financial Information:** Provide the information requested in a-d, beginning with the most recently completed fiscal year. If you named an organizational unit in the IMLS Supplementary Information Form (including Abstract), this information must pertain to that unit.

**Section 2. Agency-Level Goals and Objectives:** Select one of the three IMLS Agency-Level Goals with which your project best aligns. Once you have selected a goal, then select one associated objective.

**Section 3. Grant Program:** Select Museum Grants for African American History and Culture. Then select one project type. (See [Sections B](#), [C2](#), and [C3](#) for information about the two project types in this grant program.)

**Section 4. Museum Profile:** Museum applicants must answer all questions (a–k) in this section. If you named an organizational unit on the IMLS Supplementary Information Form (including Abstract), this information must pertain to that unit.

## IMLS Budget Form

Make sure that JavaScript is enabled in your web browser. Download the [IMLS Budget Form](#) (PDF, 1.7MB) to your computer and work on it outside your web browser. When it is complete, save it as a PDF and upload it as part of your application through Grants.gov.

The IMLS Budget Form accommodates up to three years of project activities and expenses. Project timelines, allowable costs, and other budget details vary by program. Be sure to review the Notice of Funding Opportunity for the grant program/category to which you are applying and the cost principles in 2 C.F.R. part 200 and 2 C.F.R. part 3187.

The Year 1 columns should include costs for activities that begin on the project start date (as listed on 6c of the SF-424S) and end 12 months later. If the project timeline exceeds one year, list the costs for the next 12 months in the Year 2 columns. If the project extends beyond two years, list the costs for the next 12 months in the Year 3 columns.

The budget should include the project costs that will be charged to grant funds as well as those that will be supported by cost share, if any. In-kind contributions to cost share may include the value of services (e.g., donated volunteer or consultant time) or equipment donated to the project between the authorized start and end dates of your project. All the items listed, whether supported by grant funds or cost share, must be necessary to accomplish project objectives, allowable according to the applicable federal cost principles, auditable, and incurred during the award period of performance. Charges to the project for items such as salaries, fringe benefits, travel, and contractual services must conform to the written policies and established practices of your organization. You must report all revenues generated with project funds during the award period of performance as program income.

If you need more lines for a specific section, summarize the information in the IMLS Budget Form and explain it further in the Budget Justification.

**1. Salaries and Wages:** Include both temporary and permanent staff as well as volunteers engaged in project activities. Document the method of cost computation in your Budget Justification by including the base salary or wages for each person and the percentage of time each person is allocated to the project activities, which may be shown as a percentage of time, number or days, or number of hours.

**2. Fringe Benefits:** Fringe benefits can be claimed as a direct cost for only those positions included in your direct cost pool and only on the portion of salaries and wages identified for this project. Indicate your organization's fringe benefit rate (in percent) and the base (in dollars) to which the rate is applied (e.g., 20% x \$175,089.00).

**3. Travel:** You must include \$3,000 per year in award funds for travel to attend IMLS-designated meetings. For all other travel costs, explain the method of cost computation for each, including subsistence, lodging, and transportation, in your Budget Justification.

You must use the lowest available commercial fares for coach or equivalent accommodations, and you must use U.S. flagged air carriers for foreign travel when such services are available, in accordance with applicable U.S. legal requirements.

**4. Supplies, Materials, and Equipment:** List the costs of supplies, materials, and equipment purchased specifically for the proposed project. For definitions and other information, please see 2 C.F.R. part 200. Use the Budget Justification to explain or describe these items in further detail.

**5. Subawards and Contracts:** List each third party that will undertake project activities and their associated costs as an individual line item on your IMLS Budget Form. Designate each third party as either a subaward or a contract using the drop-down menu on each line.

To explain or describe these items in further detail, you may either:

- itemize these third-party costs in your Budget Justification or

- include a separate IMLS Budget Form as a Supporting Document and refer to it in the Budget Justification for more complex projects.
- 6. Student Support:** If your project includes Student Support costs, enter them in this section. [Click here for a definition and examples of Student Support.](#)
  - 7. Other Costs:** Use this section for costs that cannot be assigned to other categories. Do not use this section to list items that do not fit in the lines allotted for another section.
  - 8. Total Direct Costs:** These amounts will total automatically.
  - 9. Indirect Costs:** Indirect costs are expenses that are incurred for common or joint objectives that cannot be easily identified with a particular project. Indicate your organization's indirect cost rate (in percent) and the base (in dollars) to which the rate is applied (e.g., 34% x \$123,456.78). [Click here for more information about indirect costs.](#)
  - 10. Total Project Costs:** These amounts will total automatically.

## Cost Share in the Budget

Cost share is that portion of the project costs that is not paid by IMLS funds. Common examples of cost share include cash outlays; contribution of property and services; and in-kind contributions, such as staff or volunteer time that support project activities.

All expenses, including cost share, must be incurred during the award period of performance unless otherwise specified and allowed by law. Federal funds from other federal awards may not be used for cost share. All federal, IMLS, and program requirements regarding the use of funds apply to both requested IMLS funds and to cost share. See 2 C.F.R. §§ 200.1 and 200.306 for more information on cost share.

## Indirect Costs in the Budget

Indirect costs are expenses that are incurred for common or joint objectives and therefore cannot be readily identified with a particular project. Some examples include depreciation on buildings and equipment, the costs of operating and maintaining facilities, and general administration and general expenses, such as the salaries and expenses of executive officers, personnel administration, and accounting. See 2 C.F.R. part 200 for additional guidance.

### Options for Calculating and Including Indirect Costs in a Project Budget

You can choose to:

- use a rate not to exceed your current indirect cost rate already negotiated with a federal agency;
- use an indirect cost rate proposed to a federal agency for negotiation but not yet finalized, as long as it is finalized by the time of the award;
- use a rate not to exceed 10 percent of Modified Total Direct Costs (MTDC) if the organization currently does not have a federally negotiated indirect cost rate and is not subject to other requirements (e.g., for States and local governments); or
- not include any indirect costs.

### **Using a Federally Negotiated Indirect Cost Rate**

Federally negotiated indirect cost rates are negotiated agreements between federal agencies and non-federal entities. If your organization already has an existing negotiated indirect cost rate in effect, you may use this rate to calculate total project costs, as long as you apply the rate in accordance with the terms of the negotiated agreement and include a copy of the current negotiated agreement with your grant application. You may also choose to use a rate lower than your current federally negotiated indirect cost rate. We will only accept federally negotiated indirect cost rates that are current by the award date.

Please be aware that the indirect cost rate(s) used in your approved IMLS budget (and that will also appear on the Official Award Notification if an award is made) will apply throughout the life of your award. You may not use different rate(s) for the award, even if you negotiate new rate(s) with your cognizant agency after the award has begun.

### **Using a Proposed Indirect Cost Rate**

If your organization is in the process of negotiating an indirect cost rate with a federal agency, you may use the indirect cost rate that was proposed to the federal agency to estimate total project costs. In such situations, if we issue an award, we will accept the rate only if the negotiations are final by the award date and a copy of the final agreement is submitted to us. IMLS staff will work with you to adjust your budget prior to issuing an award.

### **Using the 10 Percent De Minimis Indirect Cost Rate**

Except for State and local government entities described in paragraph D.1.b. of Appendix VII to 2 C.F.R. part 200, you may choose to charge a de minimis rate of 10 percent of Modified Total Direct Costs (MTDC), as long as you do not have a current federally negotiated indirect cost rate and you meet the applicable requirements. See 2 C.F.R. part 200, including 2 C.F.R. §§ 200.1, 200.414(f), and 200.510(b)(6), for additional guidance.

Modified Total Direct Costs means all direct salaries and wages, applicable fringe benefits, materials and supplies, services, travel, and up to the first \$25,000 of each subaward (regardless of the period of performance of the subawards under the award). MTDC excludes equipment, capital expenditures, charges for patient care, rental costs, tuition remission, scholarships and fellowships, participant support costs, and the portion of each subaward in excess of \$25,000. Other items may only be excluded when necessary to avoid a serious inequity in the distribution of indirect costs, and with the approval of the cognizant agency for indirect costs. See 2 C.F.R. § 200.1 for additional information.

If you are using the 10 percent indirect cost rate, check the box indicated on the IMLS Budget Form. No additional documentation is required.

### **Applying an Indirect Cost Rate to the Cost Share Portion of a Budget**

You may, if consistent with 2 C.F.R. part 200 (Uniform Guidance), apply your indirect cost rate to your total direct costs covered by cost share, but any costs you claim as cost share must be accounted for in the cost share column on the IMLS Budget Form. IMLS funds can be used for indirect costs, but only for the portion of the total direct costs for which you are requesting IMLS funds (the Grant Funds column). (See, for example, 2 C.F.R. §§ 200.412-414.)

### **Restrictions on Project Costs Included in Indirect Cost Calculations**

If you have a federally negotiated indirect cost rate agreement, you must follow its conditions and requirements.

As noted above, if you do not have a current federally negotiated (including provisional) indirect cost rate and meet applicable requirements, you may elect to charge a de minimis rate of 10 percent of the Modified Total Direct Costs (MTDC) in your indirect cost calculations.

If you have a current federally negotiated indirect cost rate agreement of less than 10 percent, you must use it rather than the de minimis rate in your indirect cost calculations.

Please see the section above on the 10 percent rate as well as 2 C.F.R. § 200.414(f) and § 200.1.

## Student Support Costs in the Budget

### Students are understood to be:

- Students enrolled in a community college, undergraduate, or graduate program of study
- Individuals participating in post-master's or post-doctoral programs that are focused on supporting their careers or professional development
- Library, archive, and museum staff participating in education and training activities focused on their careers or professional development

### Examples of Student Support include:

- Tuition support for students participating in the project
- Salaries or stipends for graduate assistant work, so long as their work is focused on research and teaching activities (therefore contributing to their education)
- Pay and benefits for a resident or fellow to work in a position that is intended to support their learning outcomes or professional development
- Costs for travel and conference registration provided to support a student or participant's learning outcomes or professional development
- Costs of supplies and equipment provided to students to support a student's learning outcomes or professional development

### Activities not considered Student Support include:

- Students employed in roles that are primarily administrative or clerical, doing work that is not primarily focused on their career or professional development. These costs should be listed in the Salaries and Wages section of the budget, and tuition paid on behalf of these students would not be considered Student Support.

(See 2 C.F.R. § 200.466 (Scholarships and student aid costs); see also 2 C.F.R. § 200.430 (Compensation – personal services).)

## Budget Justification

To write your Budget Justification, follow the format of the IMLS Budget Form's section headings and save it as a PDF. Address both grant funds and cost share, if included.

### 1. Salaries and Wages

Identify each person whose salary or wages will be paid with IMLS funds or by cost share, provide their names, and describe their role in the project. Document the method of cost computation by including the base salary or wages for each person and the percentage of time each person is allocated to the project activities, which may be shown as a percentage of time, number of days, or

number of hours. If cost share is being provided by unpaid volunteers, explain how you arrived at the dollar amount used to represent the value of their services.

If you are requesting IMLS funding for salaries of permanent staff, explain the reason for the request and how the regular duties of these individuals will be performed during the award period of performance.

## **2. Fringe Benefits**

Identify your organization's fringe benefit rate (in percent) and the base (in dollars) to which the rate is applied for each person. If you have consolidated several persons' fringe benefits into a single line on the IMLS Budget Form, break out the detail here.

## **3. Travel**

For each trip, explain the purpose of the trip and specify the points of origin and destination, the name of the traveler, and break out the costs of transportation, lodging, per diem, and any other expenses associated with the travel. Explain how you arrived at these dollar amounts.

**Note:** You must include \$3,000 per year in award funds for travel to attend IMLS-designated meetings. No additional explanation for this cost item is required.

## **4. Supplies, Materials, and Equipment**

List each type of supply, material, and equipment you propose to purchase or provide as cost share for the project. Detail the number and unit cost for each item and explain how you arrived at the dollar amounts. Provide vendor quotes or price lists as Supporting Documents with your application.

## **5. Subawards and Contracts**

List the costs of project activities to be undertaken by third parties for the project. (Familiar terms for third parties can include partners, consultants, subgrantees, contractors, collaborators, vendors, and service providers.) Identify each third party by name, describe their role in the project, the activities they will carry out, and the cost. For each entry, designate the third party as either a subrecipient (who receives a subaward) or a contractor (who receives a contract). Explain costs for third parties and provide relevant Supporting Documents with your application. IMLS grant funds may generally not be provided to other U.S. government agencies.

You are responsible for making a case-by-case determination as to whether the agreement you make with a third party should be a subaward or a contract. That determination will depend upon the nature of your relationship with the third party with respect to the activities to be carried out. (See 2 C.F.R. § 200.331 (Subrecipient and contractor determinations).)

## **6. Student Support**

Explain your method for calculating the costs listed in this section. [Click here for a definition and examples of Student Support.](#)

## **7. Other Costs**

Use this section for costs that cannot be assigned to other categories.

## **8. Total Direct Costs**

Indicate the total direct costs and specify how much you are asking from IMLS and how much you intend to provide as cost share, if any.



## 9. Indirect Costs

If you include indirect costs in your project budget, identify the indirect cost rate (in percent) and the base (in dollars) to which the rate is applied. [Click here for more information about indirect costs.](#)

## 10. Total Project Costs

Indicate the total project costs here and specify how much you are asking from IMLS and how much you intend to provide as cost share, if any.

## Proof of Private, Nonprofit Status

An organization applying as a private, nonprofit institution must submit a copy of the letter from the Internal Revenue Service indicating its eligibility for nonprofit status under the applicable provision of the Internal Revenue Code of 1954, as amended. (See 2 C.F.R. § 3187.7(b).) IMLS will not accept a letter of state sales tax exemption as proof of nonprofit status.

## Appendix Four – Guidance for Creating a Digital Products Plan

IMLS is committed to expanding public access to digital products that are created using federal funds. The digital products you create with IMLS funding require careful stewardship to protect and enhance their value, and they should be freely and readily available for use and re-use by libraries, archives, museums, and the public. IMLS also recognizes that technology is dynamic and does not want to inhibit innovation by prescribing set standards and practices that could become quickly outdated. Therefore, IMLS asks each applicant proposing to create digital products to prepare and submit a Digital Products Plan describing how they will address specific aspects of creating and managing digital products, employing practices and standards that are most appropriate for their specific project. Like all components of an IMLS application, your plan will be closely scrutinized by IMLS staff and by expert peer reviewers, and it will be important in determining whether your project will be funded. Organize your plan to address the following: Type, Availability, Access, and Sustainability.

IMLS participates in the Federal Agencies Digital Guidelines Initiative (FADGI), a collaborative effort by federal agencies to define common standards, guidelines, methods, and best practices for creating digital collections. The FADGI website includes a growing list of links to relevant standards, recommendations, and other resources. While this list is not exhaustive—nor does IMLS endorse any specific resource—applicants considering digital projects may find the information useful. [Click here to access the FADGI website.](#)

## Type

### What digital products will you create?

Most projects are likely to generate digital content, resources, or assets. They may be digitized or born-digital products created by individuals, project teams, or through community gatherings. Examples include, but are not limited to, still images, audio files, moving images, microfilm, object inventories, object catalogs, artworks, books, posters, curricula, field books, maps, notebooks, scientific labels, metadata schema, charts, tables, drawings, workflows, teacher resources, and software, including source code, algorithms, applications, and digital tools, plus accompanying documentation.

In your Digital Products Plan, describe the digital content, resources, or assets you will create or collect, the quantities of each type, the digital file format(s), the accompanying metadata, and any relevant standards you will use. If you are developing software, you should also specify the programming languages, platforms, frameworks, software, or other applications you will use to create your software and explain why you chose them.

## Availability

### How will you make your digital products openly available (as appropriate)?

IMLS encourages grant recipients to make works produced with IMLS support widely available, and to share their work products (including publications, datasets, educational resources, software, and digital content) whenever possible through free and open-access journals and repositories. Your project may involve making digital products available through public or access-controlled websites, kiosks, or live or recorded programs. IMLS expects applicants to ensure that publications produced under an award (including but not limited to peer-reviewed manuscripts resulting from research conducted under an award) are made available in a manner that permits the public to access, read, download, and analyze the work without charge.

In your Digital Products Plan, describe how you will make the digital content, resources, assets, software, and metadata available to the public. Include details such as the delivery strategy (e.g., openly available online, available to specified audiences) and underlying hardware/software platforms and infrastructure (e.g., specific digital repository software or leased services, accessibility via standard web browsers, requirements for special software tools to use the content, delivery enabled by IIIF specifications). Identify and explain the reasons for any limitations in your Digital Products Plan.

## Access

### What rights will you assert over your digital products, and what limitations, if any, will you place on their use? Will your products implicate privacy concerns or cultural sensitivities, and if so, how will you address them?

Grant recipients may copyright any work that is subject to copyright and that was developed under an award or for which ownership was purchased. However, IMLS reserves, for Federal Government purposes, a royalty-free, nonexclusive, and irrevocable right to reproduce, publish, or otherwise use the work and authorize others to reproduce, publish, or otherwise use the work.

IMLS expects applicants receiving federal funds for developing or creating digital products to release these files under open-source licenses to maximize access and promote reuse. All work products resulting from IMLS funding should be distributed for free or at cost unless IMLS has provided written approval for another arrangement.

In your Digital Products Plan, identify any licenses under which digital products will be shared (e.g., Creative Commons licenses, RightsStatements.org statements). Describe what intellectual property rights you will assert over your digital products and explain any limitations or conditions you will place on their use. If your products implicate privacy concerns or cultural sensitivities, describe these issues and how you plan to address them.

## Sustainability

### How will you address the sustainability of your digital products?

To the maximum extent possible, the digital products created with IMLS funding should be freely and readily available for use and reuse by libraries, archives, museums, and the public. Some digital products that are generated during a project should be long-lived, requiring permanent

preservation, and others (e.g., preliminary analyses, drafts of papers, plans for future work, peer-review assessments, most social media communications, and communications with colleagues) should be retained and shared in the medium- or short-term.

In your Digital Products Plan, describe your plan for preserving and maintaining digital products during and after the period of performance and identify the appropriate length of time different digital products should be curated. Address storage systems, shared repositories, technical documentation, migration planning, and commitment of organizational funding for these purposes.

**Note:** You may charge the federal award before closeout for the costs of publication or sharing of results if the costs are not incurred during the period of performance of the federal award (see 2 C.F.R. § 200.461).

## Appendix Five – Guidance for Conservation Surveys

The following guidance applies to applications requesting support for general conservation surveys, detailed conservation surveys, and environmental surveys.

### General Conservation Survey

A general conservation survey is a broad assessment of all an organization's collections and environmental conditions. Its purpose is to describe conditions, identify conservation problems, and suggest future conservation activities in general terms. For most institutions, it is the logical first step in collections conservation.

The general conservation survey report should include the following:

- an executive summary;
- general information about your museum;
- the goals of the survey;
- an overview of the collections, their condition, and policies governing their care;
- descriptions of the condition of your building, facilities, and all exhibition and storage areas;
- descriptions of climate control and environmental conditions;
- information about staffing, including training needs; and
- recommendations for future conservation care in order of priority (to be used as the basis of a long-range conservation plan).

### Detailed Conservation Survey

A detailed conservation survey is a systematic, item-by-item examination of all or part of a museum's collections by a conservation professional. The end product of a detailed conservation survey should be a set of condition reports that identifies the condition of each object or specimen, its treatment priority, and the cost and method of treatment. A detailed conservation survey should precede any request for an IMLS grant to fund treatment.

This type of survey can help your museum identify conservation problems specific to a particular collection, object, or specimen, including the need for treatment; establish priorities for treatment; and determine the resources and time necessary to address any issues.

## Environmental Survey

An environmental survey is an assessment of your museum's environmental conditions, including but not limited to temperature, relative humidity, and light. It is conducted by a conservation professional with input from other types of consultants as needed. Funds may be used to survey environmental conditions in exhibition areas, storage areas, and other places where collections are housed.

An environmental survey can help a museum:

- identify specific environmental problems,
- set priorities for making environmental improvements,
- design specific solutions for correcting environmental problems,
- develop a monitoring program to better determine existing environmental conditions, and
- map collections (for living plants).

## Appendix Six – Conflict of Interest Requirements

As a non-federal entity, you must follow IMLS conflict of interest policies for federal awards. You must disclose in writing any potential conflict of interest to an IMLS Program Officer, or to the pass-through entity if you are a subrecipient or contractor. This disclosure must take place immediately whether you are an applicant or have an active IMLS award.

The IMLS conflict of interest policies apply to subawards as well as contracts, and are as follows:

- As a non-federal entity, you must maintain written standards of conduct covering conflicts of interest and governing the performance of your employees engaged in the selection, award, and administration of subawards and contracts.
- None of your employees may participate in the selection, award, or administration of a subaward or contract supported by a federal award if he or she has a real or apparent conflict of interest. Such a conflict of interest would arise when the employee, officer, or agent, any member of his or her immediate family, his or her partner, or an organization which employs or is about to employ any of the parties indicated herein, has a financial or other interest in or a tangible personal benefit from an organization considered for a subaward or contract. The officers, employees, and agents of the non-federal entity must neither solicit nor accept gratuities, favors, or anything of monetary value from subrecipients or contractors or parties to subawards or contracts.
- If you have a parent, affiliate, or subsidiary organization that is not a state, local government, or Indian tribe, you must also maintain written standards of conduct covering organizational conflicts of interest. Organizational conflicts of interest means that because of relationships with a parent company, affiliate, or subsidiary organization, you are unable or appear to be unable to be impartial in conducting a subaward or procurement action involving a related organization.

## Appendix Seven – Keywords

In the Abstract block of the IMLS Supplementary Information Form, we ask you to list from one to eight keywords that best characterize your project. Choose from the options that appear alphabetically below. Please separate your keywords with commas. IMLS may use these keywords as search terms in its compilations describing the agency's grantmaking and/or provide them as tools to help applicants, other awardees, and the public understand more about what IMLS supports. Please make sure to select no more than eight.

<p><b>A-B-C</b></p> <ul style="list-style-type: none"> <li><input type="checkbox"/> Accessibility / Universal Design / Inclusive Design</li> <li><input type="checkbox"/> Archives Practice / Management / Use</li> <li><input type="checkbox"/> Artificial Intelligence / Machine Learning</li> <li><input type="checkbox"/> Broadband Access</li> <li><input type="checkbox"/> Civic Engagement</li> <li><input type="checkbox"/> Civic Technology</li> <li><input type="checkbox"/> Collections Care / Conservation / Preservation</li> <li><input type="checkbox"/> Collections Management</li> <li><input type="checkbox"/> Community Engagement</li> <li><input type="checkbox"/> Community Memory / Community History</li> <li><input type="checkbox"/> Community Science</li> <li><input type="checkbox"/> Crowdsourcing</li> </ul> <p><b>D-E-F-G</b></p> <ul style="list-style-type: none"> <li><input type="checkbox"/> Data Privacy / Security</li> <li><input type="checkbox"/> Data Science / Computational Analysis</li> <li><input type="checkbox"/> Digital Asset Management</li> <li><input type="checkbox"/> Digital Preservation / Curation</li> <li><input type="checkbox"/> Diversity, Equity, Inclusion, and Accessibility</li> <li><input type="checkbox"/> Early Learning</li> <li><input type="checkbox"/> Emergency / Disaster / Crisis Preparedness and Response</li> <li><input type="checkbox"/> Environmental Education</li> <li><input type="checkbox"/> Family Learning</li> <li><input type="checkbox"/> Fellowship / Internship / Mentorship Programs</li> <li><input type="checkbox"/> Gaming</li> </ul> <p><b>H-I-J-K-L</b></p> <ul style="list-style-type: none"> <li><input type="checkbox"/> Institutional Capacity Building</li> <li><input type="checkbox"/> Language Preservation / Cultural Revitalization</li> <li><input type="checkbox"/> Literacy: Civic</li> <li><input type="checkbox"/> Literacy: Digital</li> <li><input type="checkbox"/> Literacy: Financial</li> <li><input type="checkbox"/> Literacy: Health and Wellness</li> <li><input type="checkbox"/> Literacy: Information</li> </ul> <p><b>M-N-O</b></p> <ul style="list-style-type: none"> <li><input type="checkbox"/> Museum and Library Partnerships</li> <li><input type="checkbox"/> Museum Education Technology</li> <li><input type="checkbox"/> Museum Exhibitions</li> </ul>	<ul style="list-style-type: none"> <li><input type="checkbox"/> Museum Interpretation</li> <li><input type="checkbox"/> Museum Multilingual Programs / Resources</li> <li><input type="checkbox"/> Museum Program Evaluations</li> <li><input type="checkbox"/> Museum Visitor Services</li> <li><input type="checkbox"/> Museum /Archives / Library Staff Professional Development / Training</li> <li><input type="checkbox"/> Open Educational Resources</li> <li><input type="checkbox"/> Oral History</li> </ul> <p><b>P-Q-R-S</b></p> <ul style="list-style-type: none"> <li><input type="checkbox"/> Pre-K-12 Out of School / Summer Programs</li> <li><input type="checkbox"/> Pre-K-12 School Programs</li> <li><input type="checkbox"/> Public Programs</li> <li><input type="checkbox"/> Scholarly Communications</li> <li><input type="checkbox"/> School Libraries / Librarianship</li> <li><input type="checkbox"/> Services and Programs for Adults</li> <li><input type="checkbox"/> Services for Children and Families</li> <li><input type="checkbox"/> Services for College Students</li> <li><input type="checkbox"/> Services for Emerging Adults</li> <li><input type="checkbox"/> Services for English-Language Learners</li> <li><input type="checkbox"/> Services for Immigrants / Refugees</li> <li><input type="checkbox"/> Services for Incarcerated Individuals / Returning Citizens</li> <li><input type="checkbox"/> Services for Individuals who are Neurodivergent</li> <li><input type="checkbox"/> Services for Individuals with Disabilities</li> <li><input type="checkbox"/> Services for LGBTQIA+</li> <li><input type="checkbox"/> Services for Older Adults</li> <li><input type="checkbox"/> Services for Rural Communities</li> <li><input type="checkbox"/> Services for Those below the Poverty Line or Unstably Housed</li> <li><input type="checkbox"/> Services for Tribal Communities</li> <li><input type="checkbox"/> Services for Urban Communities</li> <li><input type="checkbox"/> Services for Veterans / Active-Duty Military</li> <li><input type="checkbox"/> Services for Teens</li> <li><input type="checkbox"/> Shared Infrastructures / Open-Source Software</li> <li><input type="checkbox"/> STEM / STEAM Programming</li> <li><input type="checkbox"/> Summer Services</li> </ul> <p><b>T-U-V-W-X-Y-Z</b></p> <ul style="list-style-type: none"> <li><input type="checkbox"/> Teacher / Educator Professional Development</li> <li><input type="checkbox"/> Web Archiving</li> <li><input type="checkbox"/> Website Creation / Enhancement</li> <li><input type="checkbox"/> Workforce Development</li> </ul>
--	---